

Research Division:

New Faculty Orientation 2024

Research Development

NU-Research Enterprise Services

Center for Research Innovation

August 21, 2024

Kim Holloway, Ph.D. Vice Provost for Research Development

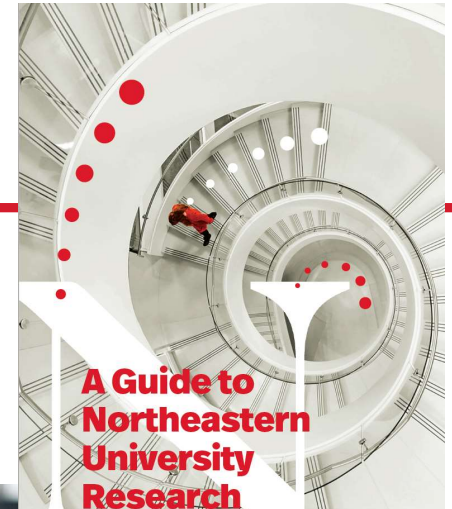
Amanda Humphrey, Chief Research Operations Officer, NU-RES

Jennifer Boyle-Lynch, Executive Director, CRI

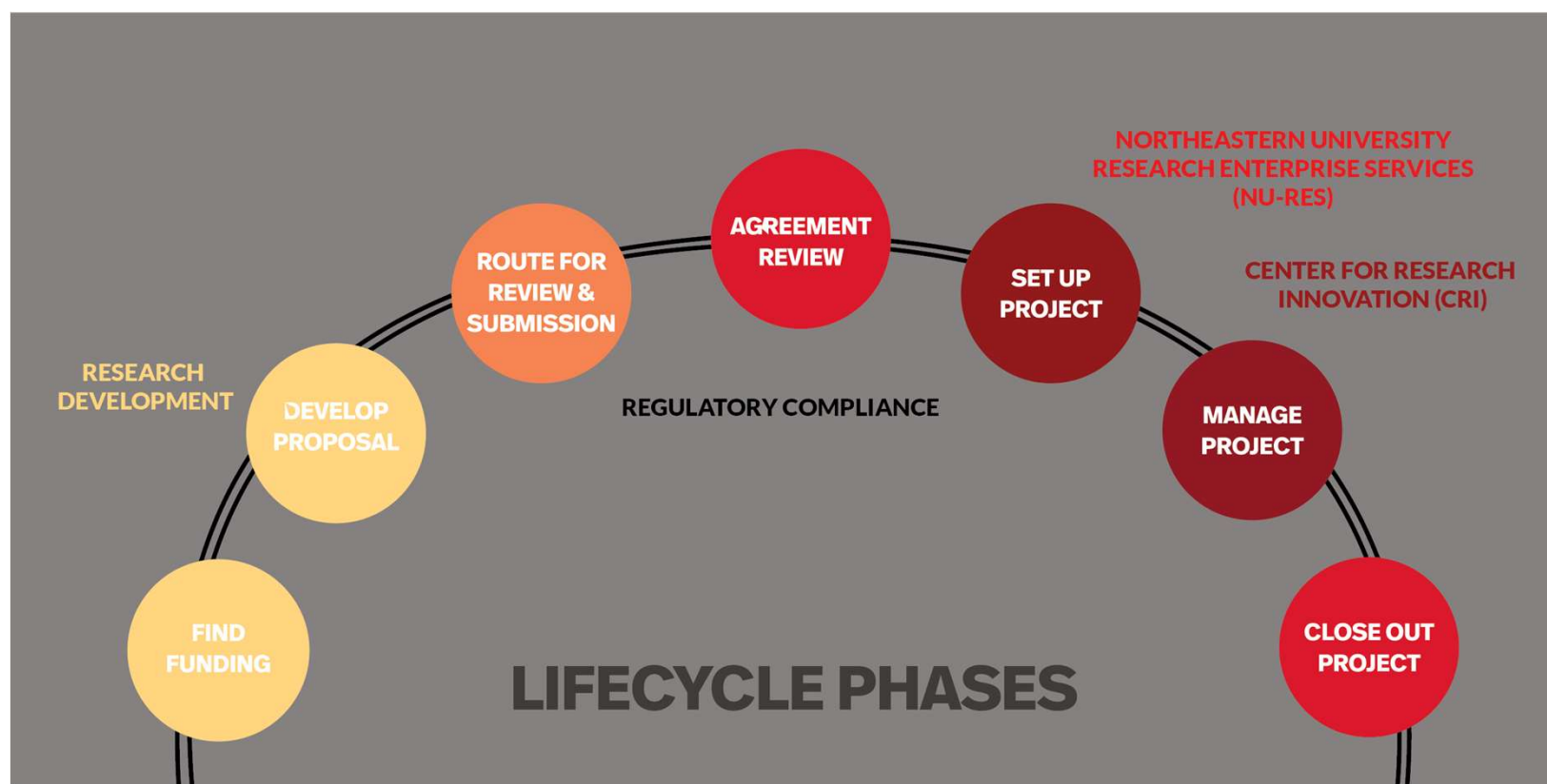
NORTHEASTERN



- Northeastern increased research awards from ~\$30M in 2001 to ~\$280M in 2023 (24% increase in sponsored research awards in FY22 and a further 19% increase in FY23)
- Commensurate increase in research enterprise support, particularly in the past 3 years
- Focus on research excellence and strategic research initiatives and research institutes in thematic areas



Our Role in the Research Lifecycle



Research Development vs NU-RES vs CRI



Research Development	Research Enterprise Services (NU-RES)	Center for Research Innovation (CRI)
<ul style="list-style-type: none"> • Strategic and tactical support for faculty at all career stages • Manage internal funding programs • Faculty professional development related to research • Support collaborative, high impact proposals • Identify and disseminate funding opportunities • Manage limited submissions 	<ul style="list-style-type: none"> • Institutional review/submission and management of externally funded grants and contracts • Non-funded research-related contracts • Research finance • Award set-up and management questions • Research-related compliance and regulatory requirements • Faculty & Staff training 	<ul style="list-style-type: none"> • Invention protection (Patent & Copyright) • Commercialization through licensing • Venture development programs • Research collaboration support • IP policy/Conflicts of interest/Compliance
resdev@northeastern.edu	nu-res@northeastern.edu or researchcompliance@northeastern.edu	cri@northeastern.edu
https://resdev.northeastern.edu/	https://research.northeastern.edu/nu-res/	https://cri.northeastern.edu/

What is Research Development?

“Research-development professionals occupy a unique and valuable role in the academic enterprise. We journey through the campus, traversing it daily in small exploratory ventures or large expeditions, helping people formulate and finance their research and doing what we can to make things a success.”

Jacob Levin

Chronicle of Higher Ed.



<https://resdev.northeastern.edu/about/>

Research Development: Our Team



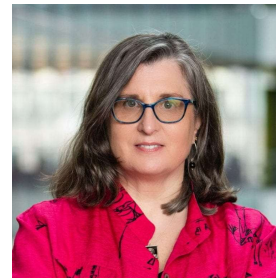
Research Development (Central team)



Kim Holloway, Ph.D.



Erin Hale
(starts Sept.)
Colleges, Large
Programs



Trish Curtin
KRI, large programs,
partnerships



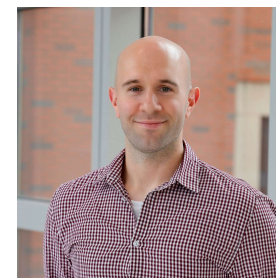
Zac Perry, Ph.D.
Institutes, Large
Programs



Jenna Horan
Internal Programs



Garrett Morrow, Ph.D.
Limited Submissions



Daniel Mueller
DOD/Events

Research Development: Our Team



College RD representatives

College of Arts, Media & Design



Katherine Calzada



Liz Allen, Ph.D.

College of Engineering



Mariah Nobrega



Jessica Chace, Ph.D.



Helen Fawcett, Ph.D.

College of Science



Vance Blankers, Ph.D.

Khoury College of Computer Science



Andrea Stith, Ph.D.

Bouvé College of Health Sciences/Charlotte



Melinda Boehm, Ph.D.

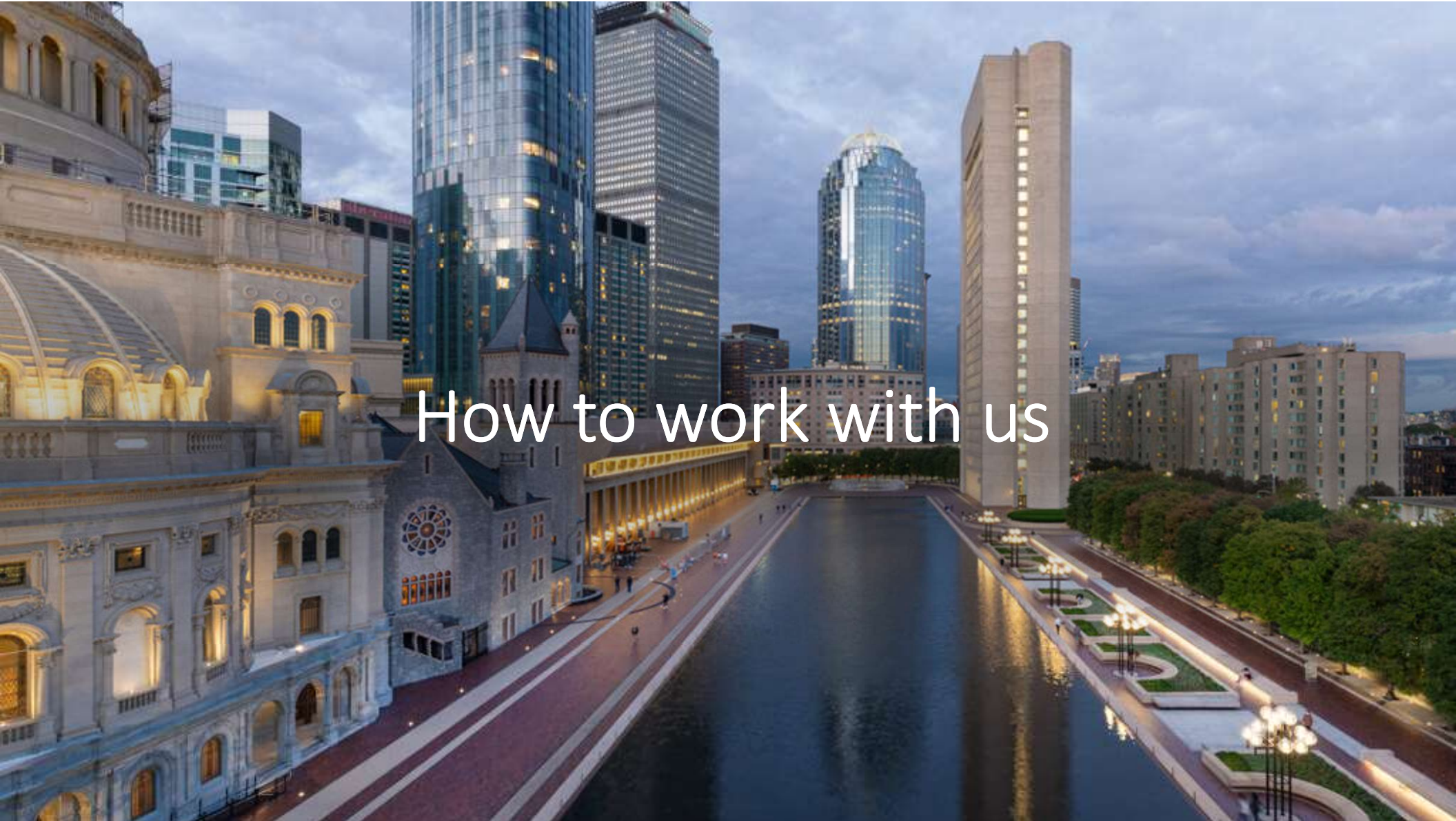


Hilary Prosnitz

College of Social Sciences & Humanities



Kate Duggan



How to work with us

Overview of Research Development Activities



Funding Opportunities



**Researcher Positioning
& Teaming**



**Early Career Faculty
Programming**



Limited Submissions



Center-scale programs



Proposal Development

Early Career Support

- Curation and targeted dissemination of early career opportunities
- New faculty meetings to discuss research goals and introduce RD, Advancement and other potential resources/collaborators
- Runway to Broader Impacts – facilitating community research partnerships
- NSF CAREER Awards: Training sessions and coordinated review process for submissions
- NIH K Awards: Establishing K-Club for eligible faculty



Early Career Faculty Resources

Northeastern College of Engineering COE Research Development
Research Support Team | What does the team do? | Find Funding

+ New

Agency-specific guidelines for proposal elements and key documents

Agency-specific guidelines, review criteria, and templates. Resources are currently available for NSF, NIH, DOD, and DOE.



NSF



NIH



Department of Energy



Department of Defense

RESEARCH TEAM

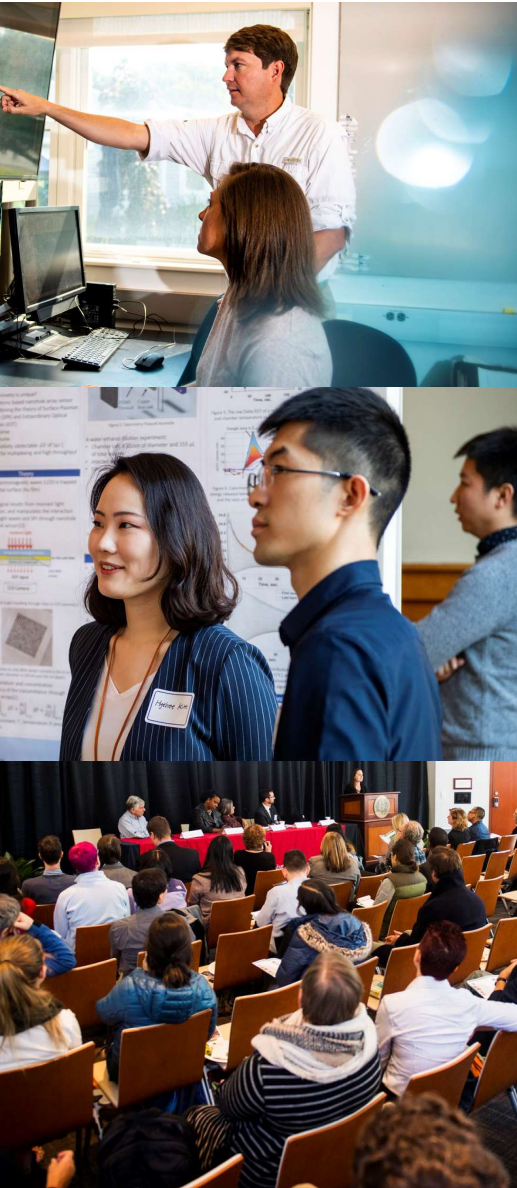
- Research Development
- Research Development
- Research Development
- Research Development Officer
- Research Development Officer
- Research Development Officer
- Research Development Associate

Meeting with... Benefits include... and identifying ways to engage with the agency, such as serving on review panels.

The following one-page templates are designed to help you generate a compelling but to-the-point description of your research that you may hand to Program Officers during a meeting. Several different template styles are included (two each for NIH, NSF, DOD projects - see slide section headers - as well as two "miscellaneous" templates).

Please note that these are only guidelines; elements can be swapped among templates or added and removed as you see fit. For readability, the font size should be 26pt at minimum.





Finding External Funding

Funding
Opportunities

1. We identify and curate funding opportunities and share via targeted emails to researchers
2. Pivot Database of funding opportunities
pivot.proquest.com/funding
3. Internal database of Limited Submissions: [Funding Announcements Archive - Research Development at Northeastern University](#)
4. Additional Resources include Foundation Directory Online & Philanthropy News Digest email alerts



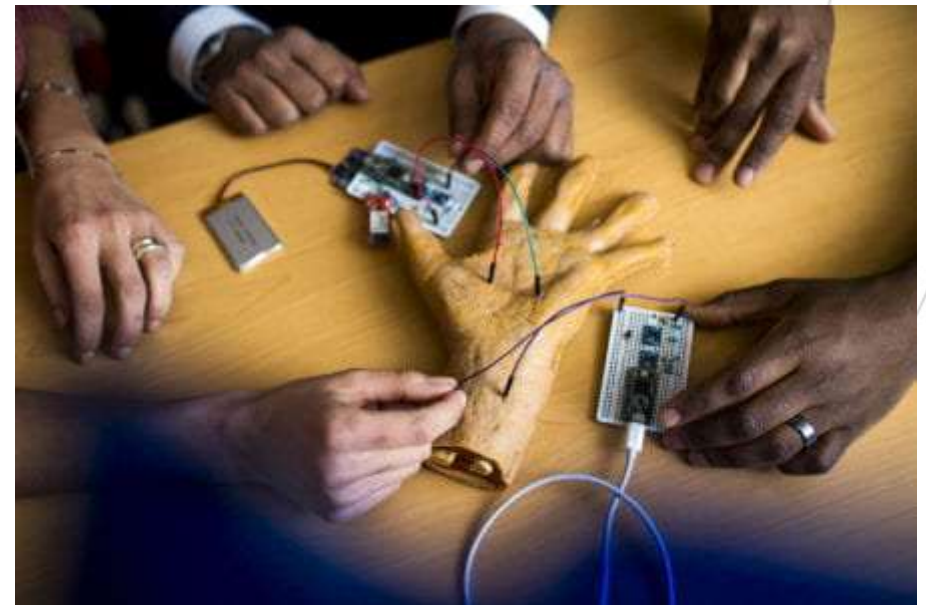
Internal funding: TIER 1

Transforming Interdisciplinary Experiential Research

- Provides funds to support interdisciplinary teams to secure proof of concept, with a goal of successfully competing for future external sponsored research opportunities
- Multiple fifteen-month grants of up to \$50,000 are awarded each year
- Proposals must address NABC Review Criteria: Need, Approach, Benefits/Costs, Competition
- Opportunity to build collaborations across campuses and across disciplines

Researcher
Positioning
& Teaming

Funding
Opportunities



Internal funding: Impact Engines

A new model for 21st century problem solving



- Key pillar of Northeastern's Academic Plan
- Positions Northeastern as a leader in research with broad societal impact
- Fosters interdisciplinary learning, research, and partnerships to solve challenges with the goal of maximum impact
- Spans and connects diverse disciplines, colleges, campuses, industry sectors, and communities around problem solving
- Website has more info:

<https://impactengines.northeastern.edu/>



We Support Proposal Development

Proposal Development

Resource Repository for Proposal Development

Access materials and information to craft successful proposals

The Research Development Resource Repository in SharePoint contains detailed descriptions of university resources, facilities and institutes. Northeastern researchers may copy and paste information from these documents into proposals as appropriate. Additionally, the Resource Repository has funding agency-specific guidelines, proposal development guides, and training materials.



Agency Guidelines

Agency-specific guidelines and review criteria. Resources focusing on finding funding opportunities and developing proposals for NSF, NIH, DOD, and DOE are currently available.



Proposal Guides

Guidance about funding opportunities for early career researchers, center proposals, equipment grants, and training grants. *{coming soon}*



Shared Facilities

Detailed descriptions of core shared research facilities, including documentation of unique equipment and research capabilities.



Research Institutes

Information about major research institutes across Northeastern's global campuses to be used in research proposals.

Proposal Development Resources on our website: <https://resdev.northeastern.edu/>



Overview of Research Development Activities



Funding Opportunities



**Researcher Positioning
& Teaming**

Academic Analytics



**Early Career Faculty
Programming**



Limited Submissions



Center-scale programs



Proposal Development

Research Enterprise Services (NU-RES)

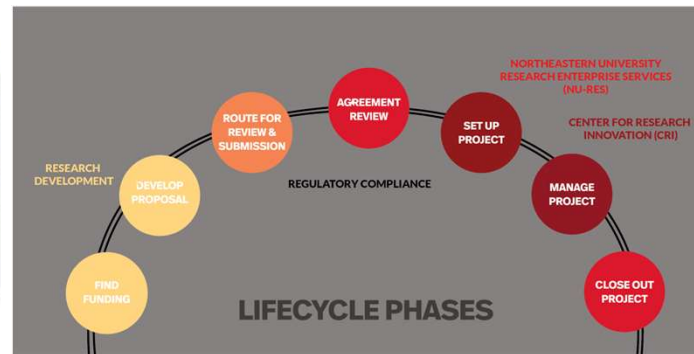


Research Administration

- Proposal Review & Submission
- Award Acceptance & Management
- Contracts & Agreements

NU-RES Hub

eRA Systems



Research Compliance

- Research Integrity
- Financial Conflicts of Interest
- Export Controls
- Responsible Conduct of Research
- International Engagements
- Animal Use & Care
- Biosafety
- Human Research Subjects

Research Finance

- Grants & Contracts Account Setup
- Financial Management & Reporting
- Invoicing & LOC Draws
- AR & Cash Management

Banner Financial Systems

NU-RES eRA Systems: Overview



- electronic **C**onflict **D**isclosures: (eCD)
 - Annual and ongoing, off-cycle disclosures
 - **(MUST COMPLETE BEFORE ANY AWARDS CAN BE SET UP)**
- electronic **P**roposal and **A**ward **W**orkflow system: **ePAWs** v. 1.0
 - Award transfers!
- electronic **C**ontract and **L**egal **A**greement **W**orkflow system: **eCLAWs**

[EPAWs 1.0](#)

[eCD](#)
[eCLAWs](#)
[ePAWs 2.0](#)
(Future)



Welcome



Award Transfers?

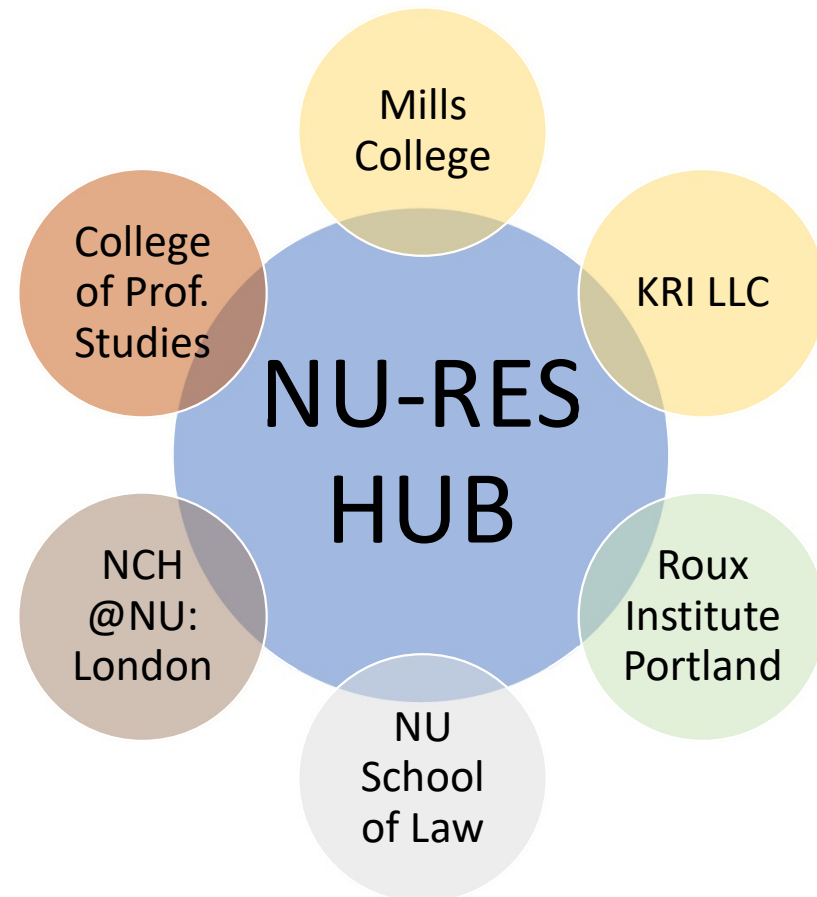


- Any incoming faculty with existing sponsored awards need to transfer them to NU as the institution overseeing the award
- If you have not already done so, please contact your departmental research administration team for help with this process
- NU-RES are also here as a resource to assist
- Expectations are that this is the most complex of award processes and takes time and a little patience to get through....

NU-RES Hub: Overview



- Provide direct assistance to faculty and research investigators; cross-function support to Hub and NU-RES team members; and work closely with all units reporting to the Senior Vice Provost for Research.
- nu-res_hub@northeastern.edu



Responsible Conduct of Research



Please join us by registering [here](#)

Participation required for many grant programs

Authorship & publication

Peer review

Mentorship

Grant stewardship

Data acquisition, storage & management

Research misconduct & conflicts of interest

Global research

Finance for faculty

Creating safe & inclusive workplaces

Research Security



- **Federal government released research security requirements on 7/9/24**
 - Government-wide requirements & also each agency will be responsible for implementing its own program
 - Much of the activity to date has been around disclosures, including participation in foreign talent programs
 - Northeastern has a policy to address this: [Policy on External International Engagements](#)
- **Cybersecurity**
 - NIST was directed to create standards, which have not yet been developed
- **Foreign Travel Security**
 - Northeastern policy [requires registration of all professional travel](#)
 - High risk destinations also require completion of an [acknowledgement of risk](#), and [required loaner devices during travel](#)
- **Research Security Training**
 - Available through Workday
 - Personalized [briefings](#) also available
- **Export Control Training**
 - Available through CITI
 - Personalized [training](#) also available

You will be partnering with the CRI on:

- Invention protection (Patent & Copyright)
- Commercialization through licensing
- Venture development programs
- Research collaboration support
- IP policy/Conflicts of interest/Compliance

All new research faculty must disclose to the CRI any prior:

- Inventions
- Software
- Agreements related to ongoing research

If you are transferring from another institution, please complete our intake form:
bit.ly/newresearcherform



Scan the code for the CRI website



CRI Academy
Northeastern community educational videos

<https://northeastern.instructure.com/enroll/8FDRNP>



IP & Contracts

Elmira Zenger
e.zenger@northeastern.edu
617-373-4589



Patent Administration

Monika Kasprzak
m.kasprzak@northeastern.edu
617-373-5821



Patent Compliance

Rhonda Kivlin
r.kivlin@northeastern.edu
617-373-5634



Commercialization
Physical & Computer Sciences

Mark Saulich
m.saulich@northeastern.edu
617-373-4009



Commercialization
Life Sciences

Vaibhav Saini
v.saini@northeastern.edu
617-373-8121



Venture
Talent Network

Katie Hemphill
k.hemphill@northeastern.edu
617-373-7822

Collaborators & Partners



- **Corporate and Foundation Advancement**
[University Advancement | Northeastern University](#)
Rob Silk, Senior Associate Vice President of Development, r.silk@northeastern.edu
- **ADVANCE Office of Faculty Development** <https://faculty.northeastern.edu/advance/>
- **Undergraduate Research & Fellowships** (Support for undergraduate research)
[Home | Undergraduate Research & Fellowships at Northeastern University](#)
- **PhD Network** (Shares graduate and postdoc funding opportunities)
[Overview | PhD Graduate Education at Northeastern University](#)
- **Public Evaluation Lab (NU-PEL)** (Evaluation for research grants)
[Home - Northeastern University Public Evaluation Lab](#)

When in doubt, reach out! Any of us can point you in the right direction!

Questions? Suggestions? New research ideas?
Get in touch with us!



Research at Northeastern website: <https://research.northeastern.edu/>

Research Development

General Email: resdev@northeastern.edu

Limited Submissions email: limitedsubmissions@northeastern.edu

Website: <https://resdev.northeastern.edu/>

NU-RES

General email: Nu-res@northeastern.edu

Research compliance email: researchcompliance@northeastern.edu

Website: <https://research.northeastern.edu/nu-res/>

Center for Research Innovation (CRI)

General email: cri@northeastern.edu

Website: <https://cri.northeastern.edu/>