



HUSKY 101
ORIENTATION

Northeastern University
Police Department



N Northeastern University Campus Safety & Policing



Police Operations

Patrol, Investigation, and Outreach



Global Site Security

Safety and Security for the Global Network



Global Safety Office

Travel, Mobility, and Program Safety



Global Safety Ops Center

24/7 Monitoring & Incident Management

Emergency Management *Ready and resilient*

Coordination Across the Global Network in All Areas of Safety and Preparedness
Leading the Structure for Key Safety Support Operations



Emergency Preparedness

Continuity, Planning, After Action Coordination, Training



Security Technology

Camera, Alarm, Radio Infrastructure, Safety Systems



Communications & Dispatch

Dispatch, Crisis Communication/Alert, Preparedness Messaging



Emergency Med. Support

AED/First Aid Supplies, First Responders, Wellness, and CPR

Michael A. Davis
 Vice President of Safety

Office of the Vice President

| | |
|--|---|
| Accountability & Training Staff Lieutenant | Budget Finance Assistant Director |
| Wellness & Support Coordinator | Budget Finance Manager |

Police Operations

Deputy Chief of Police
Senior Director

Patrol Operations
Lieutenant
Sergeants, Police Officers,
Community Service Officers

Investigations & Spec. Op.
Lieutenant
Sergeant Detective, Detectives, Police
Officer, Crime Analyst

Event Safety & Admin.
Lieutenant
Sergeant, Admins

Community Engagement
Sergeant
Police Officers & Media Specialist

Emergency Management

Emergency Management
Senior Director

Emergency Management
Assistant Director

Security Technology
Assistant Director
Communications Technician,
Security Technician,
Community Service Officer

Emergency Comm.
Comm. Supervisor
Operators / Dispatch

Global Safety Office

Global Safety Office
Senior Director

Travel Safety & Security
Associate Director

International Safety & Sec.
Specialist

Global Security
Operations Center Staff,
Student Co-Op(s)

Global Site Security

Global Site Security
Senior Director

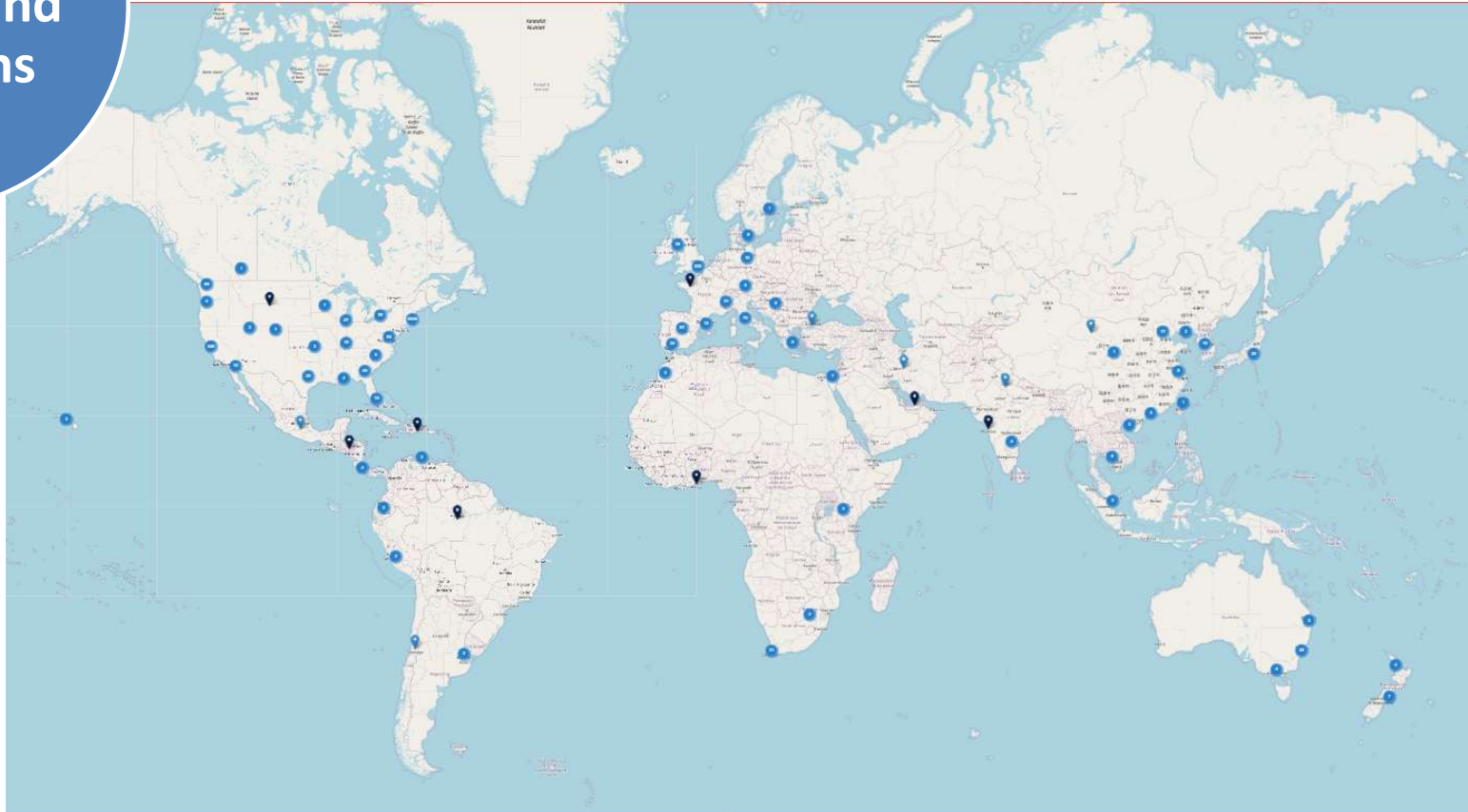
Oakland, Public Safety
Director

Regional Safety Director
Director

Contract Security, Guards/
Officers, Dispatch, DPS Staff

Locations,
People, and
Programs

GSOC -What We Monitor



Where you feel like you belong...

NUPD - Department Personnel

- 70 +/- Sworn, Trained, Armed Police Officers
- 25 +/- Community Service Officers
- Emergency Medical Technicians
- Investigations Unit
- Community Engagement Unit
- Community Resource K-9's



Where you feel safe...

- Emergency Blue Light Phones
- Safety Escort Services
- CCTV Systems
- AEDs
- Fire & Security Alarms
- 24/7 Foot, Cruiser, and Bike Patrol

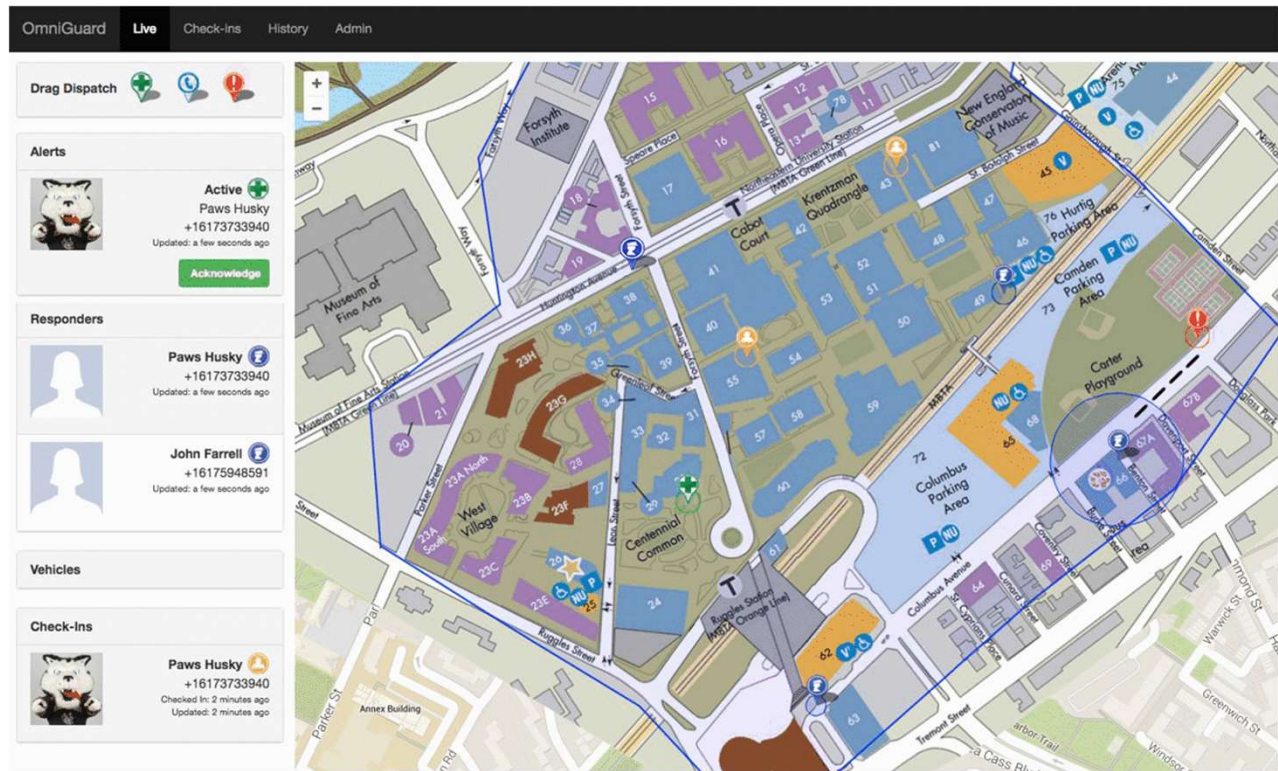
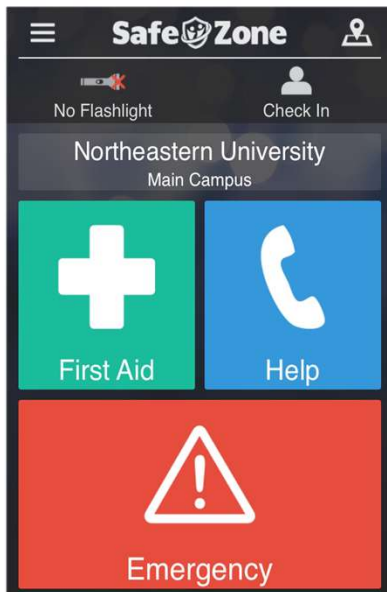
For On-Campus Emergencies:
Dial **3333** from any campus phone
or **617.373.3333** from your cellphone

**For Off-Campus
Emergencies:**
Dial **911**

For All Other Inquiries:
Dial 2121 or
617.373.2121



Where you feel safe...



Northeastern University

Where you feel safe...

What are the most frequently reported crimes?



Where you feel safe...

Crimes of Opportunity

Most Common Areas For Theft:

Snell Library



Student Center



Common Areas In Res. Halls



Northeastern Students Are Partners In Community Safety and Security!



Crimes of Opportunity

Crimes of Opportunity

Most Common Items:

Cellphones and Tablets



Backpacks



Laptops



Bicycles



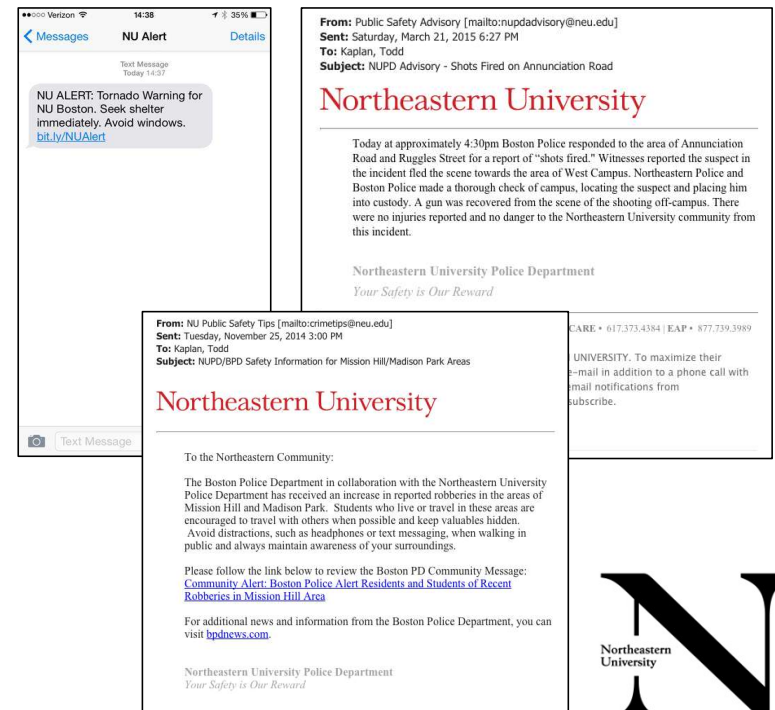
Northeastern Students Are Partners In Community Safety and Security!



Where you feel safe...

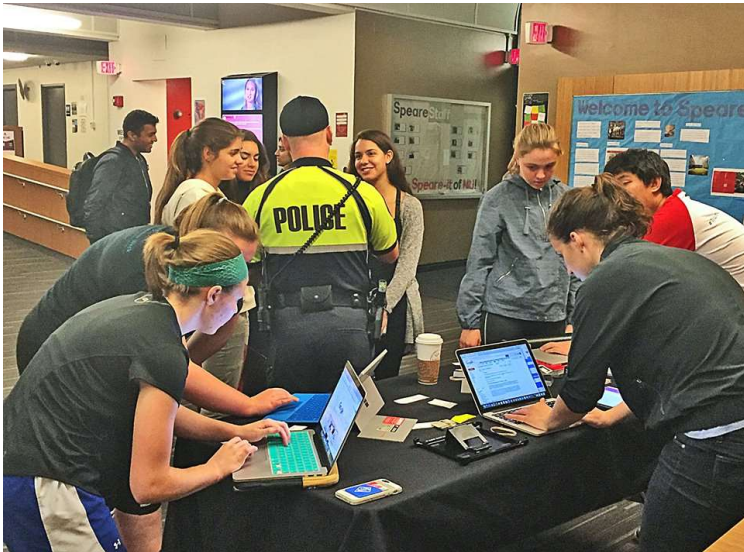
NU ALERT: Emergency Messaging Delivered Via Email & Text

- Emergency Alerts
 - Immediate threat to campus safety and security
 - Timely Warnings
 - Incidents that are not immediate threats and/or potential crime patterns on/near campus
 - NUPD Advisory
 - Targeted messaging providing information about potential/immediate threats to specific areas on/near campus.
- Text “NUPDADVISORY” to 226787 (CAMPUS)**



Where you can grow and explore...

- NUPD offers free property registration for laptops, bikes, tablets, etc...
- Property registration creates obstacles for potential thieves and provides the best chance for recovery.
- To begin the registration process go to www.bit.ly/nupdregister



Where you can grow and explore...

Community Engagement:

Key to NUPD's Mission

- Rape Aggression Defense (RAD) programs for men and women
- S.A.F.E. Classes and CPR Training
- Safety Talks and Presentations
 - Aim to Prepare Program

Our goal is to provide the safest learning and living environment for students, faculty, staff and community!



Where you can grow and explore...

Community Resource Dogs:



Contact NUPD

716 Columbus Avenue, 100CP

nupd.northeastern.edu

617.373.2696

Deputy Chief Ruben Galindo
r.galindo@northeastern.edu

Staff Sgt. John Farrell
j.farrell@northeastern.edu

Social Media

@northeasternpd

