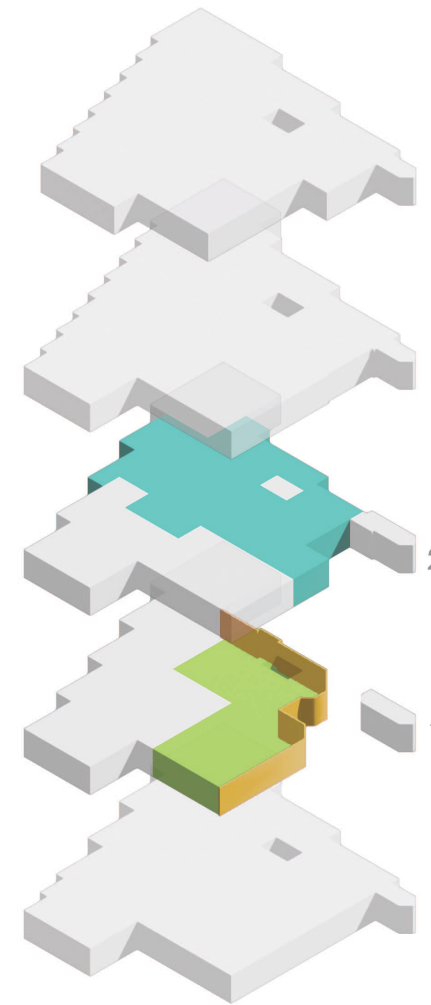
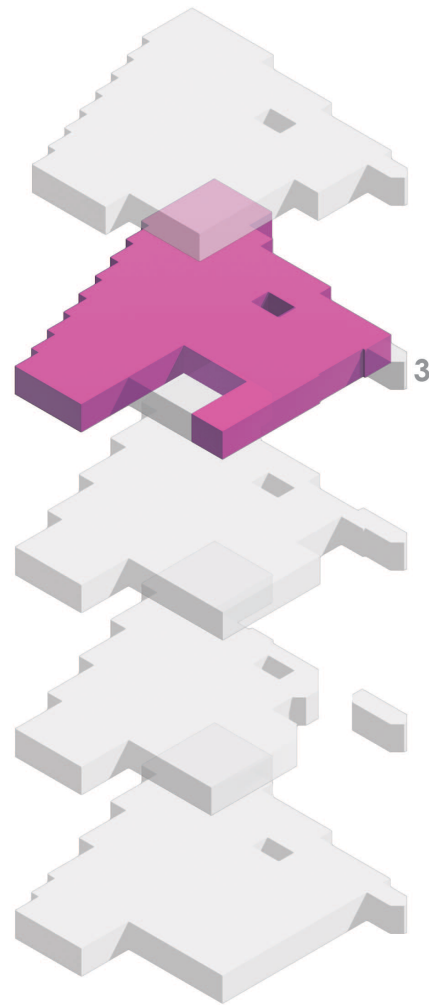
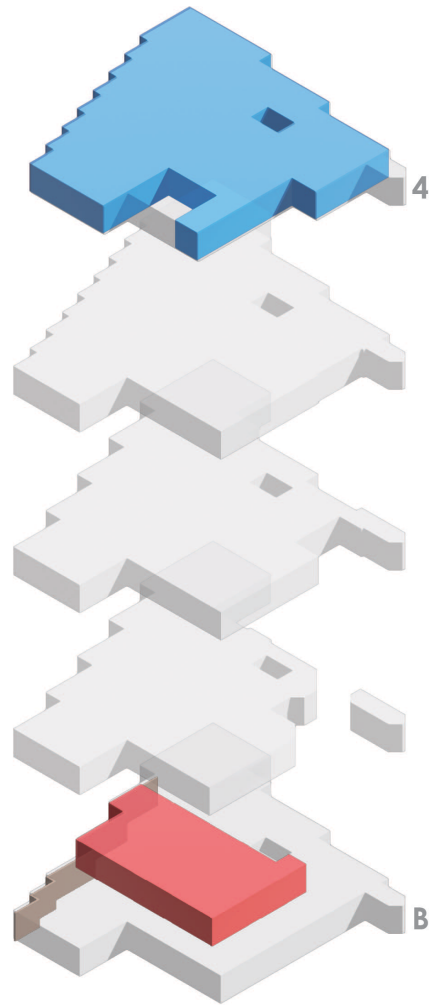
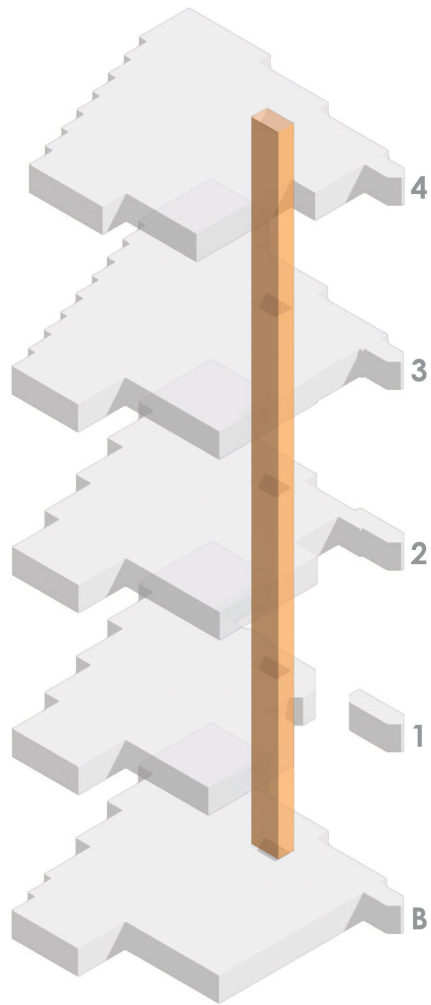


Library and Information Collaboration Committee Report

- LICC Members:
 - Daniel Cohen (CSSH, Vice Provost & Dean of the Library); David Smith, chair (Khoury); Monica Borgida (CPS/SOL, Undergraduate Programs); Angela Chang (DMSB, Marketing Group); Kelly Conn (CPS, Graduate Programs); Ron Willey (COE, Chemical Engineering).
- Report from Dean Cohen
- Summary of Committee Charges and Findings
- Three Resolutions





Phase



Phase



Phase



Phase

Phasing the Work

Oakland



“Read & Publish”



Charges 1a & 1b

- *Identify best practices for the Snell Library to connect with global campus library services, especially Mills college.*
- Consulting with Dean Cohen and Janice Braun, head of the Mills Library, the committee recognized the unique value of Mills' special collections, from incunabula (early printed books before 1500) to artists' books of the nineteenth and early twentieth centuries to early work on digital music.
- *Identify best practices for the library to communicate the role of librarians in supporting new and existing faculty.*
- The Library's efforts in negotiating Read/Publish agreements should be supported by other units in the university that are already spending money on publication charges.

Charge 2

Identify opportunities for the University community to support and amplify messaging related to ongoing library renovations.

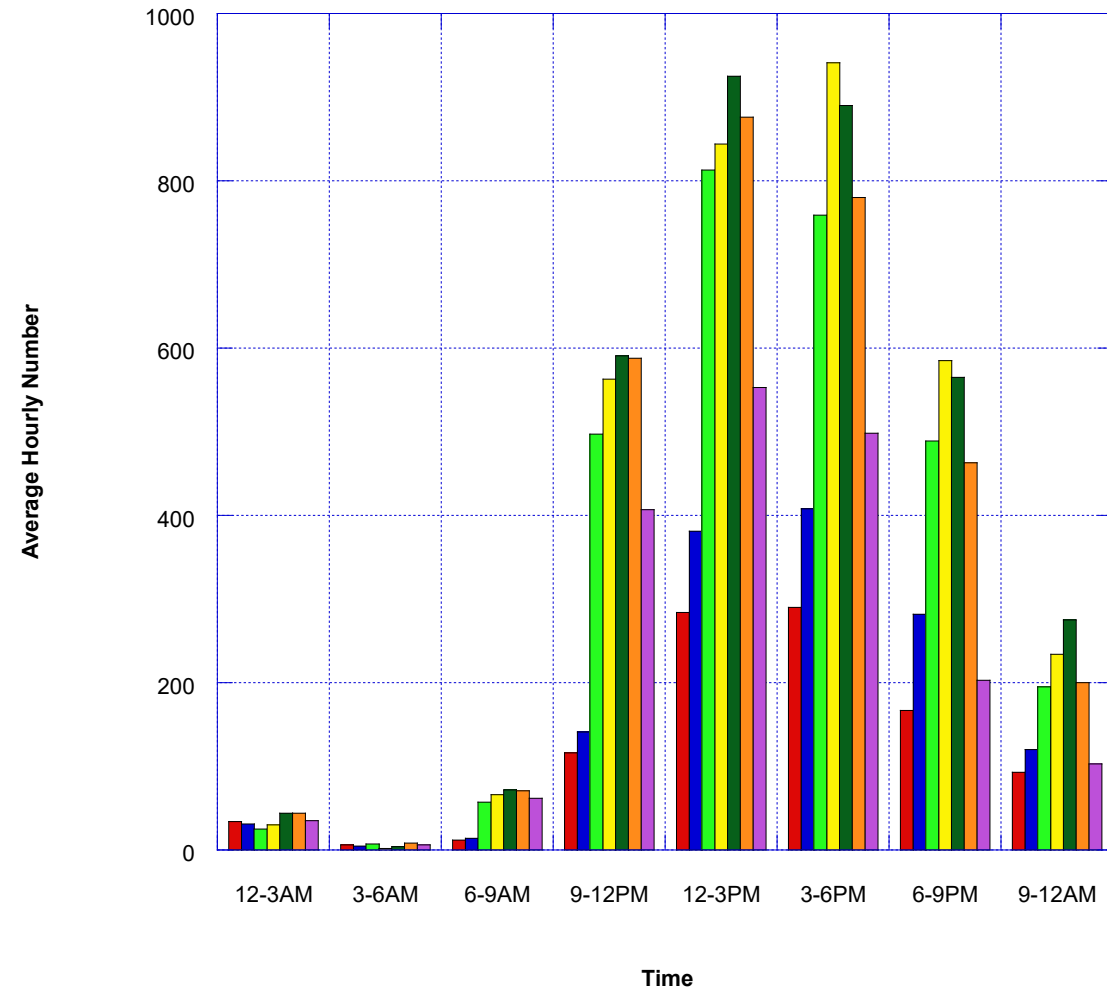
A new version of the library website, with portals for each campus in the global network, has also been rolled out successfully.

Especially during renovation, study space is tight in Snell Library, the most-used Boston-campus building.

“The largest problem in library space allocation is a shortage of study space, which is really a university-wide issue. While the renovation will increase overall seating to 3100 seats, more quiet and group study space will be needed.”



Library Usage Data - Number of People Working in the Library by Time



Resolution #1

WHEREAS over the past year the Northeastern University Library has achieved integration at the operations level with the Mills College Library;

WHEREAS the Mills Library's special collections are a unique resource with value to the entire Northeastern community;

and WHEREAS Northeastern University has staff with world-class experience in library digitization;

BE IT RESOLVED that the Library should allocate resources and staff to digitizing important parts of Mills' special collections to make them available for teaching and research.

Resolution #2

WHEREAS publishing research articles by faculty, staff, and students is a fundamental part of Northeastern's mission;

and WHEREAS individual faculty and their deans have often paid for publishers' publication charges out of their individual research funds;

BE IT RESOLVED that the University provost, deans, and librarian adopt a holistic approach to allocating funds for library subscription and publication costs and enter into flat-fee agreements whenever possible.

Resolution #3

WHEREAS Snell Library, as the hub of 24-hour student studying, is at capacity especially during its renovation;

and WHEREAS the availability of study spaces in other locations is distributed among different entities within the University;

BE IT RESOLVED that the Library, Registrar, and representatives from individual colleges coordinate on providing students with tools to find study space.