



# University Update

From the Provost and the Chancellor  
2026

# Academic Planning Process

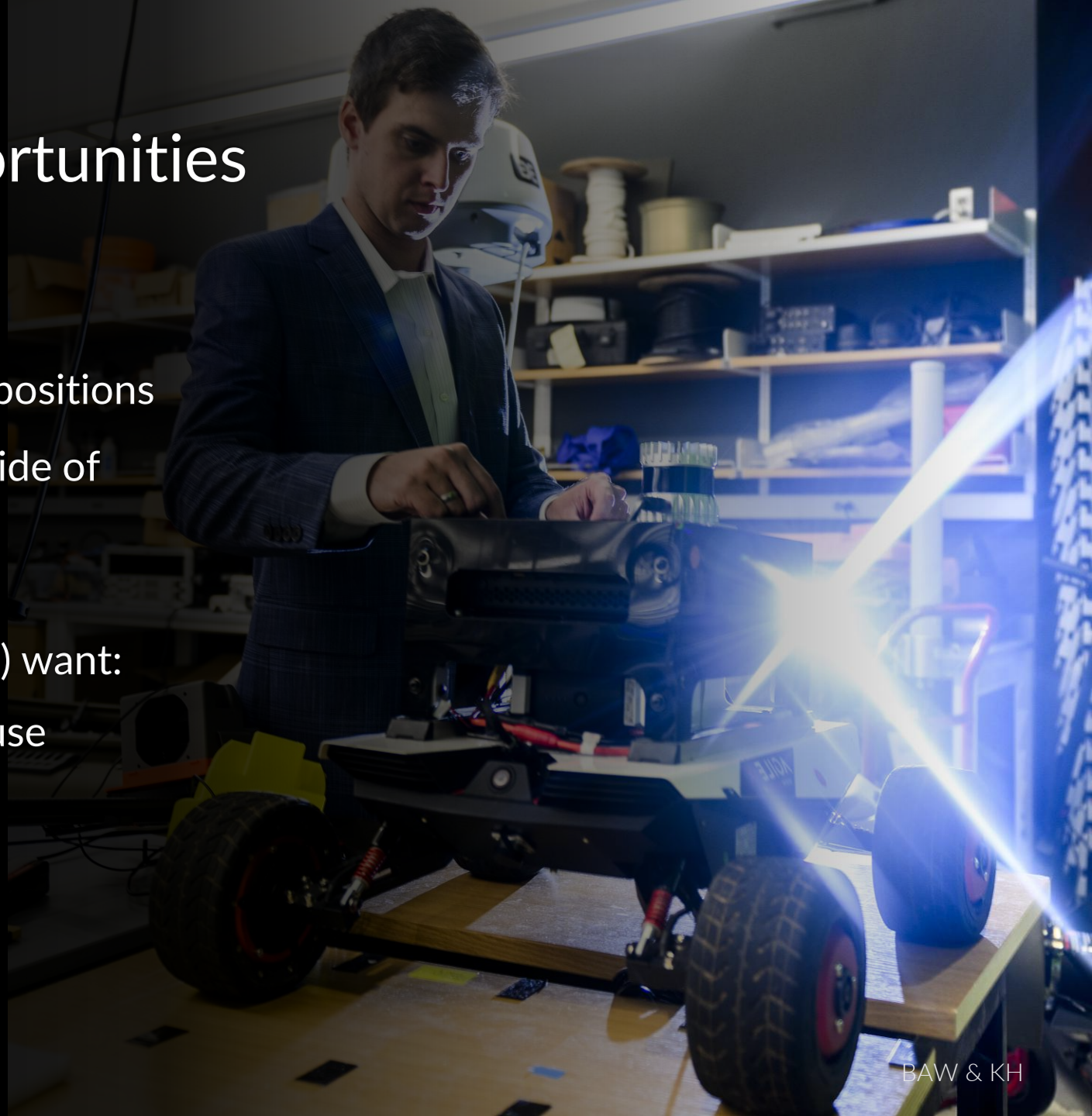
- A new academic plan is underway, with six working groups which include representatives from of faculty, staff, students, and alumni/strategic partners.
- Theme: Human Agency in the Age of AI
- Leverages our core strengths – global network; experiential education; use-inspired research; partnerships
- The main activities with working groups, focus groups, community input will be this semester, synthesis over summer 2026.

# AI: Challenges and Opportunities

- The job market:
  - **28%** higher salaries for AI skilled positions
  - **51%** of AI-required roles are outside of traditional IT and CS
  - **800%** growth in AI roles
- What students (the future workforce) want:
  - Clear, consistent guidance on AI use
  - AI education
  - Career readiness

Source: Lightcast report, July 2025

Office of the Provost & Chancellor



BAW & KH



# Our Vision – AI Readiness and Responsibility

- 90% of students use generative AI for their studies
- Our curricula evolves as does the way we teach and assess
- We provide real world experiential learning opportunities with AI
- Students graduate AI-ready



# Institutes

## New Institutes in 2025

### **The Defense Industrial Base Institute:**

Strengthens US defense manufacturing through partnerships that address workforce gaps and identify strategic investments, enhancing Northeastern's national security impact.

### **The Dublin Innovation Institute:**

Based at University College Dublin, fosters North American-European academic and industry research partnerships in technology, health, sustainability, AI, and manufacturing.

### **The Institute for Cognitive and Brain Health:**

Studies lifestyle effects on brain health using advanced research methods to develop evidence-based interventions that improve global mental health outcomes.

## Provost-Funded Institutes

- Institute for Experiential Artificial Intelligence
- Institute for Experiential Robotics
- Institute for Mechanobiology
- Institute for Intelligent Networked Systems
- Institute for Nanosystems Innovation
- Network Science Institute
- Quantum Materials and Sensing Institute

# Ongoing & Newly Launching Searches

Dean, College of  
Science

Dean, College of  
Engineering

Senior Vice Provost  
for Research

Dean, D'Amore-McKim  
School of Business

A dark gray world map serves as the background for the slide. The continents are visible in a slightly lighter shade of gray.

# Global Experiential Learning

## Summer 2025

**1562 Students**

Participated in Dialogue of Civilization

71 Programs  
58 Locations

**362 Students**

Participated in Summer In  
5 Programs  
4 Locations

## Fall 2025 Pathways

**1328 NU in Students**

9 Partner Locations

Czech Republic, France, Germany,  
Ireland, Italy, Northern Ireland,  
Portugal, Scotland and Spain

**273 NYC Scholars**

**824 London Scholars**

## Fall 2025

**189 Fall Study Abroad**

**83 Fall Semester In**

**37 Incoming Exchange**



# Personalized, Experiential Learning

**5963** students on co-op (Fall 2025)

Academic Year for UG and Grad Total Hires: **12,912**

Academic Year for UG only Total Hires: **9,691**

**6066** students on Experiential Projects (AY25)

- 618 projects
- 336 sponsors
- 355 courses

New Experiential Learning Programs:

- Co-op Consultancy
- Experiential Practicum



# Enrollment Management Key Metrics

**105,190**

Total  
Applications

**47%**

Yield Rate:  
Boston, Fall

**600%**

Early Decision  
Growth since 2015\*

\*772 in 2015  
5872 in 2023

Source: Northeastern Enrollment Management



# Enrollment

2025  
**26,235**

Undergraduate  
students

2025  
**23,559**

Graduate students

Source: Northeastern Enrollment Management



# Belonging. Vision. Building. Action.

- A shared responsibility
- 04/2025 Vision of Belonging Conference
- 10/2025 Building a Culture of Belonging Conference
- 2026 Professional Development for Belonging Leadership



# Research Education

## PhD Students & Postdocs

- Experiential PhD (since 2017)
  - 120+ Partnerships
  - \$15M in external, non-sponsored research funding for PhD students since 2018 (80% from industry), providing over 500 student-years of support.
- Increase in NSF-GRFP Fellows
  - 34 Active NSF Fellows vs. 1 in 2006
  - 79 all time National Science Foundation (NSF) Graduate Fellowships Awarded
- Graduate Certificates and "New Literacies" workshops
  - Global Doctoral available to Northeastern PhD students and visiting students
  - Experiential Leadership
  - Postsecondary Teaching
- Three dual PhD partners in University of Paris Saclay, France; University College Dublin, Ireland; and Sapienza University of Rome, Italy



# Our Experiential PhD Partnership Network

Diffusing research education across the Global University System to realize a future with fluid global mobility to enhance research training and to promote faculty collaborations

Today:

- PhDs and Postdocs at 10 system nodes
- 5% of Northeastern PhDs are beyond the Boston campus
- Global Doctoral Research Graduate Certificate facilitates global research mobility

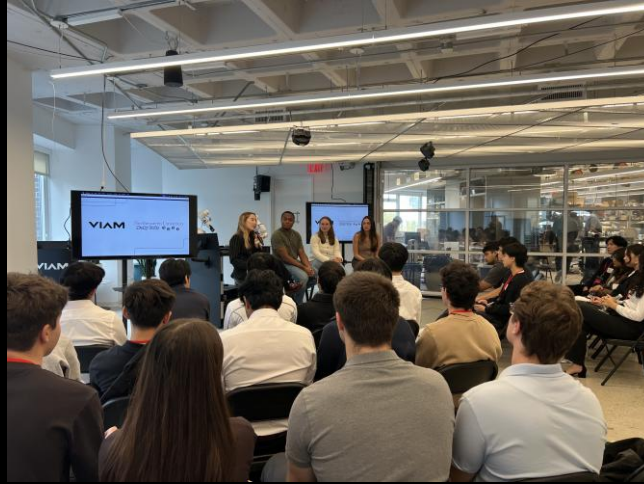


**Partners include 10 of the 15 top biotech companies representing a \$1.8T market cap**

# The Global University System

---

## New York Scholars





# Classroom Updates

## Seattle:

- 7 Classrooms upgraded to GLS standards
  - 225 & 401 Terry Ave N

## New York:

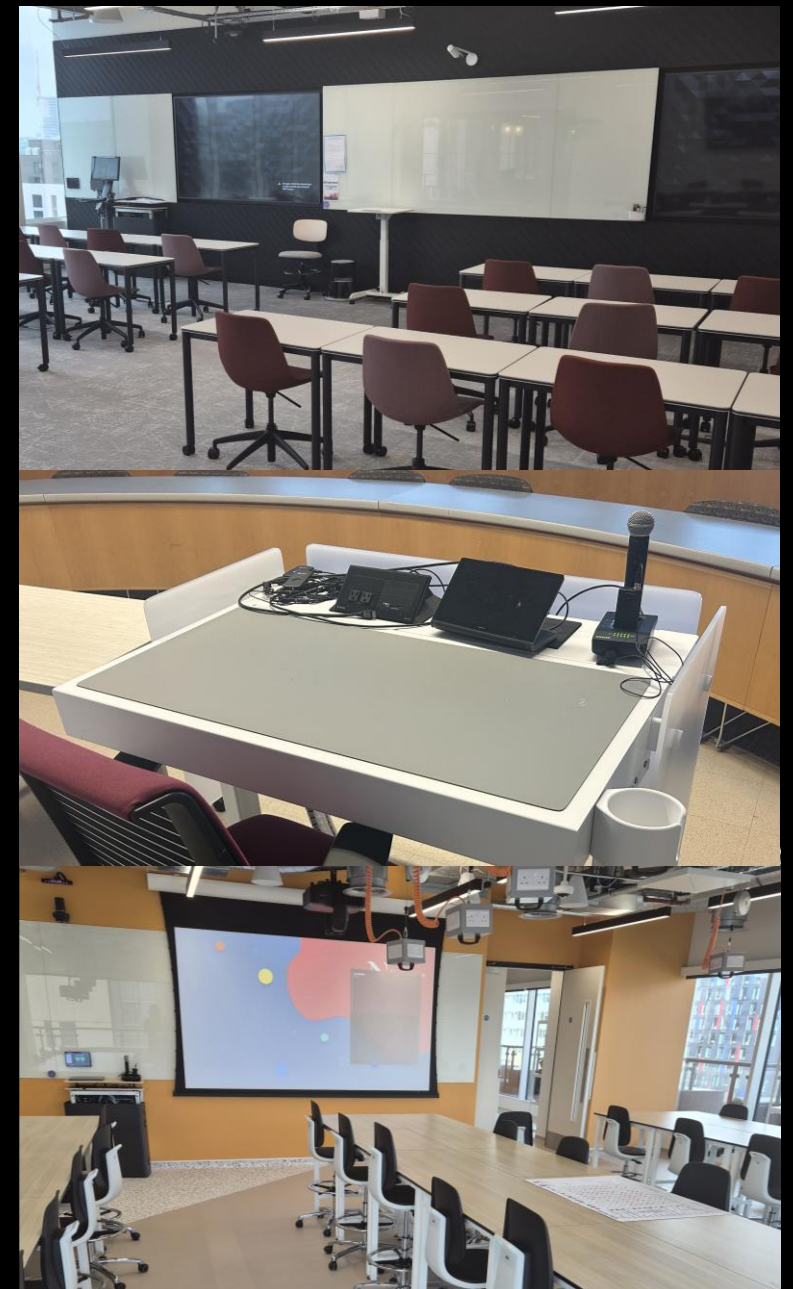
- 17 Classrooms received MS Teams Mobile Hubs
  - Existing MMC campus, leased classroom space

## London:

- 7 Classrooms upgraded to GLS standards
  - Portsoken

## Boston:

- 24 technology upgrades
  - East Village – new LED wall with AV upgrades
  - Hastings – 4 rooms received Crestron Flex upgrades
  - Behrakis – 13 rooms upgraded to GLS standards
  - Hurtig – 1 room upgraded with advanced routing functionality
  - Forsyth – 5 rooms upgraded with advanced routing functionality



# Faculty Profile – Fall 2025

**2,232**

T/TT/FTNTT  
as of January

**93**

New FT faculty hired  
for FY 26, as of January

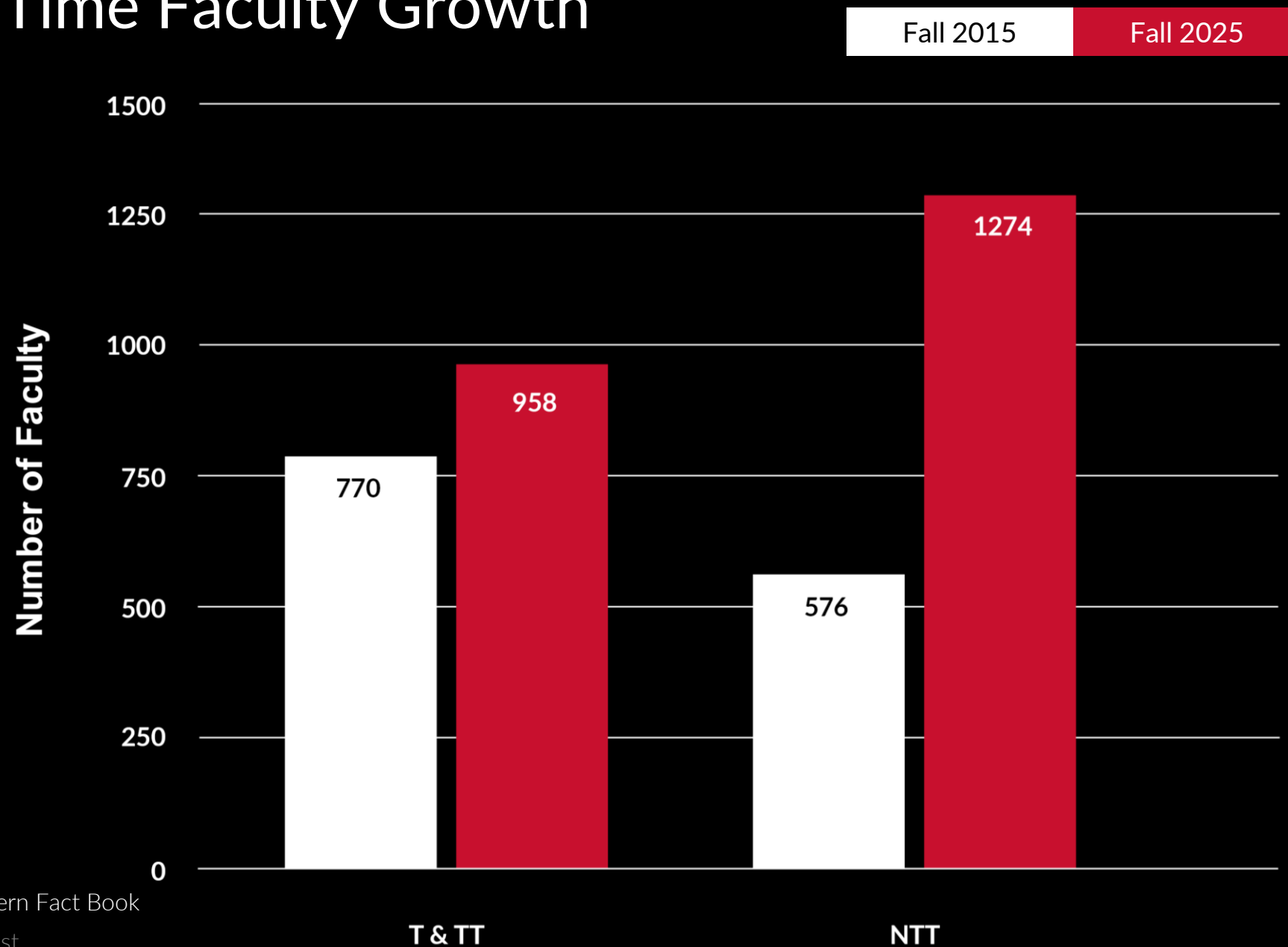
Source: University Decision Support

Office of the Provost

BAW



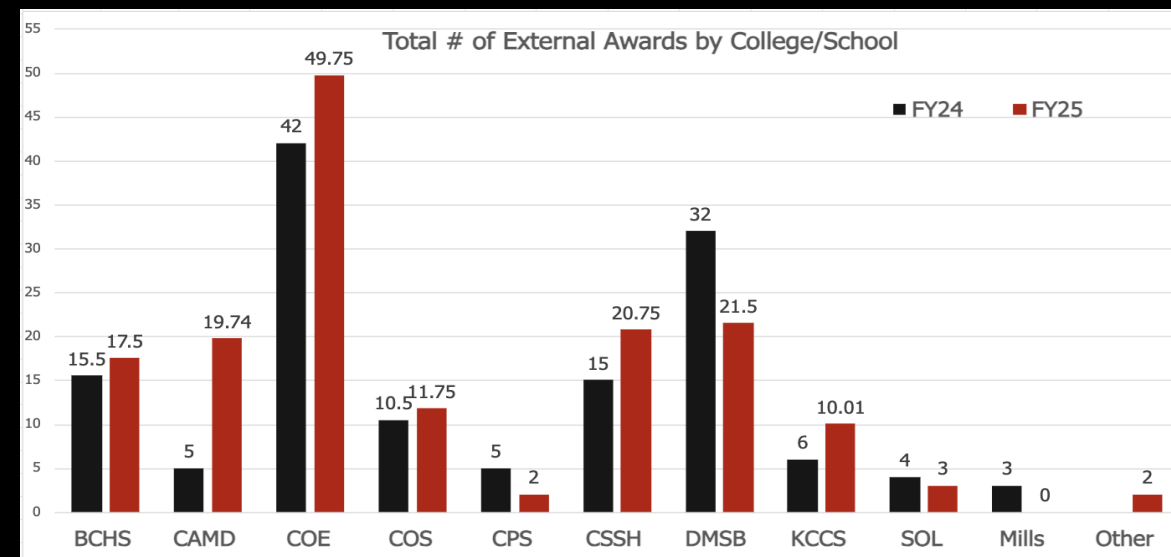
# Full-Time Faculty Growth



Source: Northeastern Fact Book  
Office of the Provost

# Honorific Awards Initiative

- Uses Academic Analytics to match faculty to award opportunities
- Coordinates faculty nominations
- Facilitates tracking and reporting of nominations and awards
- Makes information accessible to the public
  - Blog Posts: [provost.northeastern.edu/announcements/](https://provost.northeastern.edu/announcements/)
  - Newsletter: <http://eepurl.com/iXpuOY>
  - Building a SharePoint site
  - Celebrating faculty achievements



	FY22	FY23	FY24	FY25
External Awards	89	123	144	158



# Select FY25 Prestigious Awardees



**Sloan Research Fellowship**

*David Bau, Khoury*



**Association of American Law Schools (AALS) - The Patricia J. Williams Award**

*Patricia Williams, CSSH, Law*



**National Academy of Sciences Member**

*Mansoor Amiji, Bouvé, COE*



**The Presidential Early Career Award for Scientists and Engineers (PECASE)**

*Eno Ebong, COE*



**National Academy of Medicine Member**

*Matthew Miller, Bouvé*



**American Association for the Advancement of Science Fellow**

*Randall Hughes, COS*



**The Presidential Early Career Award for Scientists and Engineers (PECASE)**

*Ambika Bajpayee, COE*



**American Academy of Arts and Sciences Member**

*Gregory Abowd, COE*



**American Association for the Advancement of Science Fellow**

*Eugene Smotkin, COS*



**Outstanding Current Affairs Documentary 2024 News & Documentary Emmy® Award**

*Darin Detwiler, CPS*



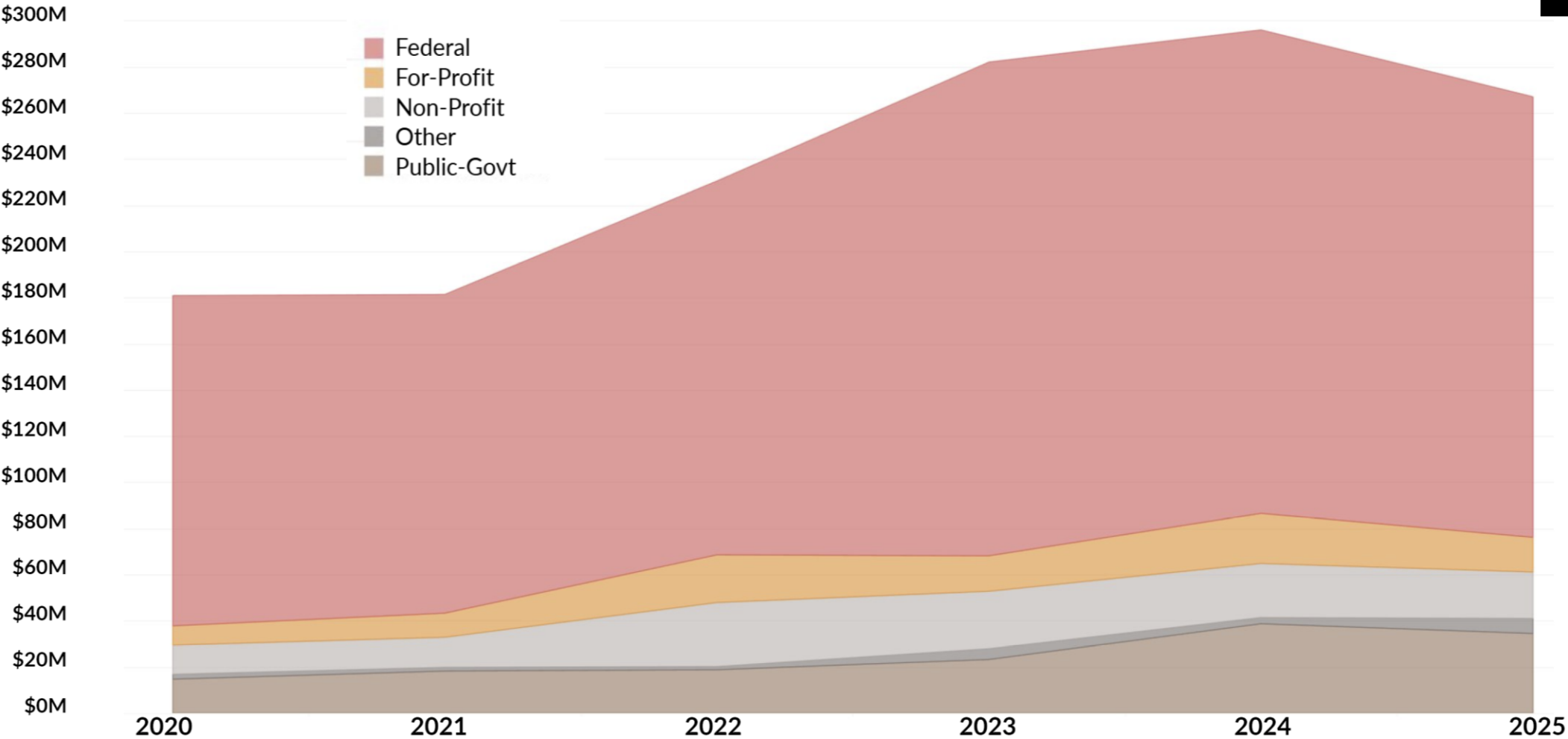
**National Academy of Sciences Member**

*Eduardo Sontag, COE*

# Research: Awards by Agency Type (\$millions)

Northeastern University & Kostas Research Institute LLC

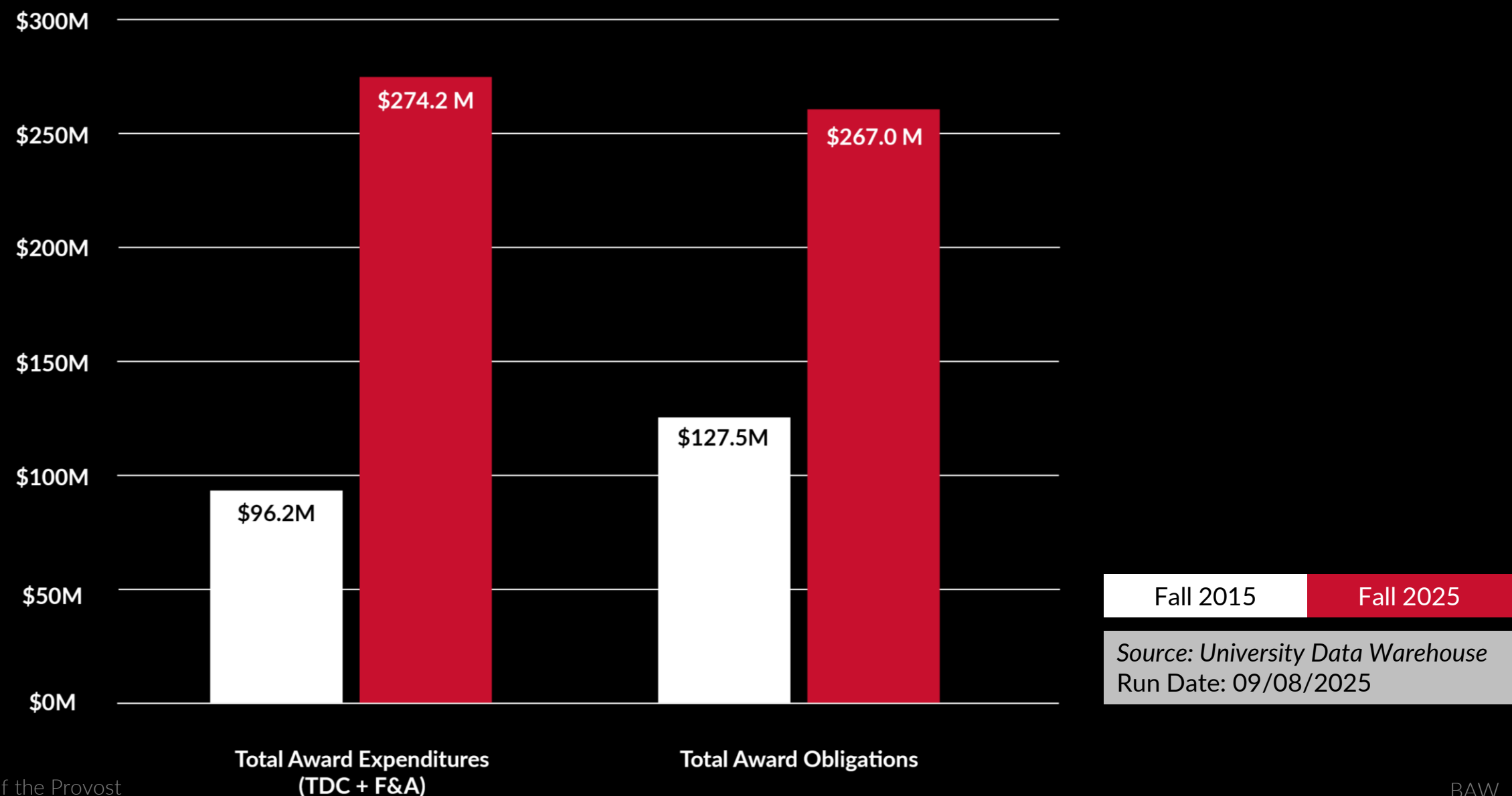
	2025
Federal DHHS	\$68.7M
Federal DOD	\$52.5M
Federal DOE	\$9.5M
Federal NSF	\$60.1M
Total	\$190.9M



Source: University Warehouse  
\*The FY 2025 data is preliminary and rounded up. Report does not include ORS Funding  
Data as of: 09/08/2025



# Northeastern and KRI Obligations and Expenditures





## A Successful Year for NSF CAREERs: 15 New FY25 Awards



**CAREER: Sublinear-Time Graph Algorithms: Foundations, Limitations, and Connections**

*Soheil Behnezhad (Khoury)*



**CAREER: Exploring the dark sector with state-of-the-art galaxy surveys**

*Jonathan Blazek (COS)*



**CAREER: Filling In the Design Landscape of Probabilistic Programming Languages**

*Steven Holtzen (Khoury)*



**CAREER: Neurocognitive development of adolescent learning**

*Juliet Davidow (COS)*



**CAREER: Formal Verification of Stateful Distributed Systems and Their Compositions**

*Ji Yong Shin (Khoury)*



**CAREER: Emergent Phases: Fracton, Symmetry, and Decoherence**

*Yizhi You (COS)*



**CAREER: Improving Data Efficiency in Deep Learning with Relaxed Symmetry Constraints**

*Robin Walters (Khoury)*



**CAREER: Context-aware framework to enable effective selection and delivery of digital health interventions**

*Varun Mishra (Khoury/Bouvé)*





## A Successful Year for NSF CAREERs: 15 New FY25 Awards



**CAREER: 3D dynamic network with bioelectrical and biomolecular interface for long-term communications with brain organoids**

*Roubing Bai (COE)*



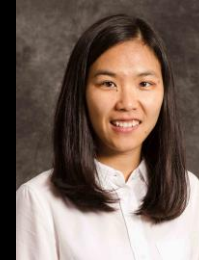
**CAREER: Foundations of Scalable, Fast, and Online Decentralized Manifold Optimization in Multi-Agent Networks**

*Shahin Shahrampour (COE)*



**CAREER: Multi-Agent Network Interdiction and Service Provision Models to Counter Human Trafficking**

*Kayse Maass (COE)*



**CAREER: Unraveling flow-fluid coupling during impact of complex fluid droplets**

*Xiaoyu Tang (COE)*



**CAREER: Computational Characterization of Reaction Mechanisms and Catalytic Microenvironments in Redox-Mediated Ammonia Electrosynthesis**

*Qing Zhao (COE)*



**CAREER: Metabolic 'doping' to enhance production of biochemicals from sustainable C1 feedstocks**

*Benjamin Woolston (COE)*



**CAREER: Mechanism-Informed AI for Biological Systems-of-Systems to Accelerate Biomanufacturing Systems Integration and Innovations**

*Wei Xie (COE)*

# Early Career Awards from Other Funders



**NIH Maximizing  
Investigators' Research  
Award for Early Stage  
Investigators (MIRA)**

*Tao Sun (COE)*



**DARPA Director's  
Fellowship**

*Aatmesh Shrivastava (COE)*



**Office of Naval Research  
Young Investigator  
Program**

*Benjamin Woolston (COE)*



**NIH Maximizing  
Investigators' Research  
Award for Early Stage  
Investigators (MIRA)**

*Mona Minkara (COE)*



**DARPA Young Faculty  
Award**

*Francesco Restuccia (COE)*



**Office of Naval Research  
Young Investigator  
Program**

*Paul Stevenson (COS)*



**NIH R21 Trailblazer**

*Lei Wang (COE/COS)*



**NIH NHLBI Research  
Scientist Development  
Award - Research &  
Training**

*Danielle Crookes (CSSH/Bouvé)*



# Early Career Awards from Other Funders



**NSF Presidential Early Career Awards for Scientists and Engineers (PECASE)**

*Ambika Bajpayee (COE)*



**American Chemical Society Young Investigator Award**

*Qing Zhao (COE)*



**NSF Presidential Early Career Awards for Scientists and Engineers (PECASE)**

*Eno Ebong (COE)*



**Google Research Scholar**

*Wengong Jin (Khoury)*



**Sloan Research Fellowship**

*David Bau (Khoury)*



**Research Corporation for Science Advancement Scialog Fellow**

*Yizhi You (COS)*

# Notable Research Awards



## Pew Innovation Fund Investigator

*Jing-Ke Weng (COS/COE)*      Pew Charitable Trusts



## Transnational Political Networks and the Future of Global Order

*Mai'a Cross (CSSH)*      Carnegie Corporation



## Digital Archive of Indigenous Language Persistence

*Ellen Cushman (CSSH)*      Andrew W. Mellon Foundation



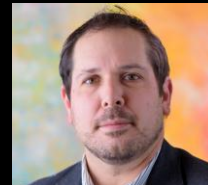
## The Future of News: Advancing experimental video storytelling through the Reinventing TV Digital Media Innovation Center to engage new audiences and strengthen democracy

*Mike Beaudet (CAMD) and John Wihbey (CAMD/CSSH)*      Stanton Foundation



## Labor Implications of AI at the Nexus of Business Processes, Tasks and Workers

*Esteban Moro (COS)*      Sloan Foundation



## PAIL: PhotoAcoustic Imaging technology for diagnostic Lung assessment

*Soner Sonmezoglu (COE)*      ARPA-H



## Improving the Safety of Medical Devices

*David Simon (Law)*      Arnold Ventures



# Notable Research Awards



**From Technology to Humans: Protecting Users of Neural and Medical Implant Technologies Through Resilience and Safety Engineering**

*Kevin Fu (COE/Khoury)* NSF



**FREEDOM IDIQ: Antennas and Sensor Advancements for Communication and Sensing**

*James Vedral (KRI)* U.S. Army Combat Capabilities Development Command Army Research Laboratory



**EV Battery Lifetime Extension With Material Intelligence (EVERMORE)**

*Juner Zhu (COE)* Advanced Research Projects Agency - Energy



**Non-ionizing Electromagnetic Radiation Effects (NIEMRE) IDIQ**

*Deniz Erdogan (KRI)* U.S. Army Combat Capabilities Development Command Army Research Laboratory



**One-Shot PetaOps/W Analog Margin-Propagation Compute Paradigm Advancing RF-MIMO Radar Processing and Classification**

*Averind Nagulu (COE)* NSF



**Intelligence-Led Policing in New Jersey: Data Integration to Support the Investigation of Gun Crimes**

*Eric Piza (CSSH)* National Institute of Justice

# Notable Research Awards



## The Institute for Information, the Internet and Democracy (Triple ID)



David Lazar (CSSH, Khoury)  
Laura Edelson (Khoury)  
John Wihbey (CAMD)  
Rebekah Tromble (CSSH, Khoury)

Knight Foundation



## Collaborative Research: An Intelligent Natural Language Interface to Improve the Accessibility of Complex Data Tasks for Blind or Visually Impaired STEM Employees



Hari Palani (Roux)  
Melanie Tory (Roux/CAMD/Khoury)    NSF



## R01: Mediators and Moderators of Executive Function Training in Older Adults

Aaron Seitz (COS/CAMD/Bouvé)  
Susanne Jaeggi (COS/CAMD)

## R61: Improving Accessibility of Vision Research and Therapy using an Open-Source, Extended-Reality Platform

NIH



## Pathmaker Program: A Model of Frontline Care Provider-Led Patient-Centered CER



Jared Auclair (CPS)  
Amanda Welsh (CPS)

Massachusetts Life Sciences Center



## Enabling Higher Scale Factors in Gyroscopes Through soFt and LacAlized interface-States in microelectromechanical resonators (FLASH)

Cristian Casella (COE)  
Matteo Rinaldi (COE)  
David Horsley (COE)  
Benyamin Devaji (COE)

DARPA



## Collaborative Research: Nutrient-mediated interactions between plastic-derived dissolved organic carbon and the biological carbon pump

Aron Stubbins (COS/COE)

NSF



# Thank you!

