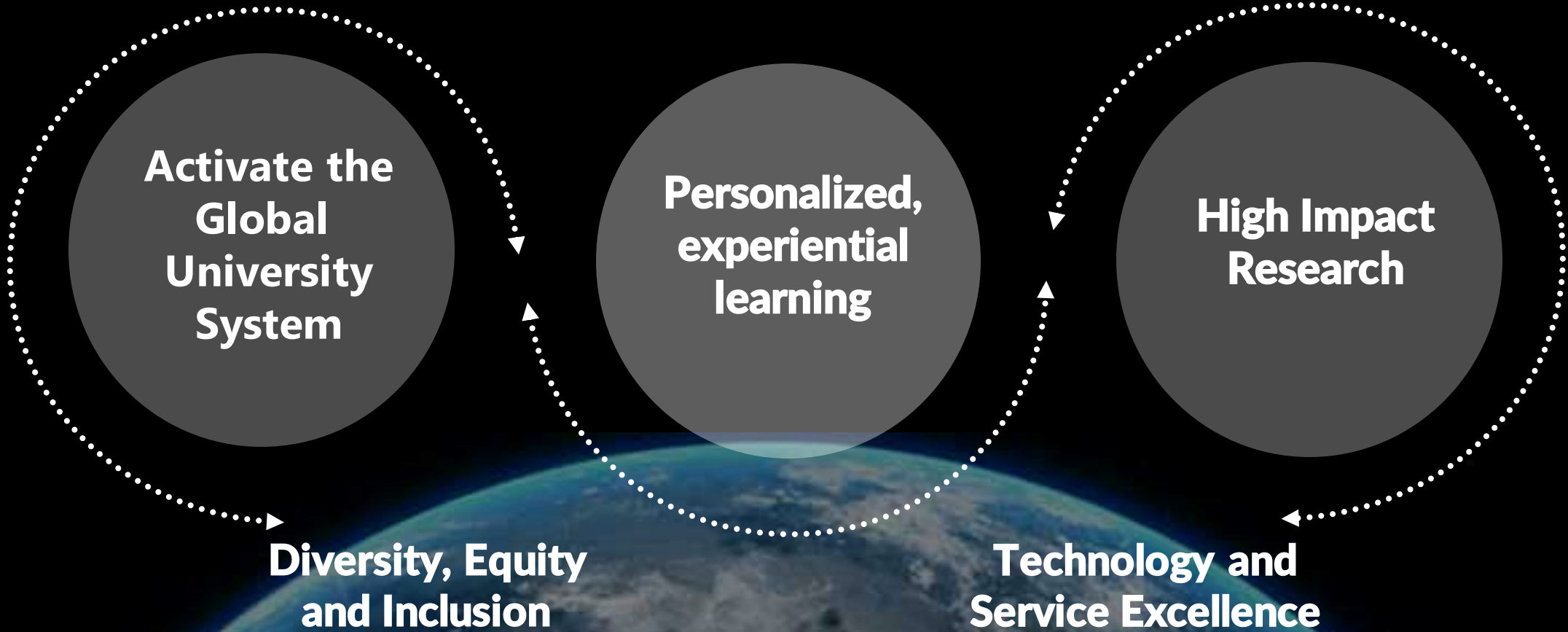


University Update

October 2022



Experience Unleashed



Impact Engine Pipeline



ADA | AI-Augmented Socially Aware Product Design**

CBH | Cognitive and Brain Health

RWHN | Real World Health Navigator

iSUPER | Intelligent Solutions to Urban Pollutions for Equity and Resilience

eA2M | Diverse Workforce Development

C2C | City to City: Finding Equitable Solutions to Local Policy Problems

HEA(RT) | Healthcare Enabled by AI in Real-Time

C2P | Cradle-to-Prison Pipeline

impactengines.northeastern.edu

Key Appointments



Beth Mynatt
Dean, Khoury College



Scott Wildman,
*Interim Academic Dean
London*



Radhika Seshan
Dean, CPS



Beth Kochly,
Interim Dean, Mills



Rebecca Hunter
*Associate Vice President &
University Registrar*

Current Searches and Reviews

Searches

Dean, D'Amore-McKim School
of Business

Dean, College of Social
Sciences and Humanities

Current Reviews

3-Year Review – Hazel Sive,
College of Science

5-Year Review - James
Hackney, School of Law

Key Appointments

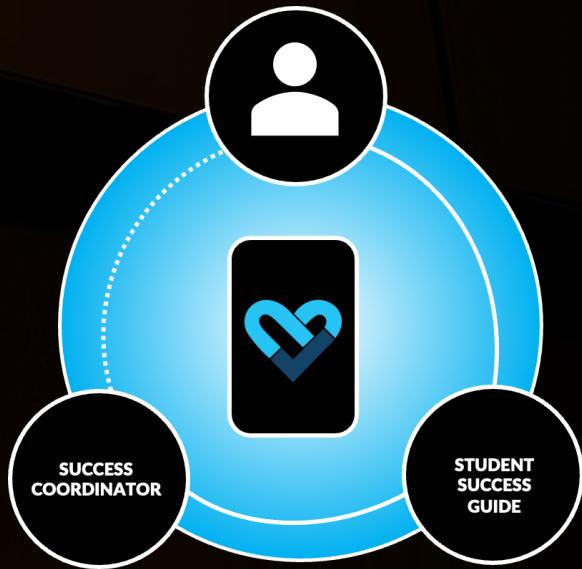


Satyajit Dattagupta (CEMO, SVC)



Karl Reid (CIO, *dual reporting structure*)

Student Success Initiative



- Early Connection
- Connect students to campus resources
- Encourage positive behavior
- Conduit for Learner Support
- Proactively identify students of concern



Expanding Global Opportunities

1736 NU in Students and 680 NU Bound Students

- **9 Locations** Including Oakland and London

1123 Students participated in Dialogue of Civilization

- **61 Faculty and Programs**
- **33 Countries**

Personalized, Experiential Learning

11,881 students on co-op

- 90% placement rate
- 386 global placements

4,821 student on XN Projects

- 647 projects
- 387 sponsors
- 311 courses



Enrollment Management Key Metrics Undergraduate

44,208

2012
total
applications

91,000

2022
total
applications

19%

2012
yield rate

41%

2022
yield rate

14%

2012
underrepresented
minorities

27%

2022
underrepresented
minorities

The Power of Experience

Accelerate turns 5!

- Enrollment has grown from 23 to 230
- Very highly rated for satisfaction by students and families

Expanding programming beyond Boston to:

- Oakland
- India
- London

Towards a More Inclusive University

- DEI Climate Survey results disseminated
- Introduced and administered racial and cultural literacy training for all faculty, staff and students
- Over 30 divisional action plans
- Recommendations delivered to Faculty Senate by the Faculty Senate Inclusion and Diversity Committee
- Appointed DEI leads in colleges and divisions
- Launched IDEAL- A shared database of DEI activities across the university system
- Reimagined grant and awards programs

Global Campus Overview



Boston

London

Oakland

Arlington

Burlington

Nahant

Charlotte

Miami

Portland

San Francisco

San Jose

Seattle

Toronto

Vancouver

Undergraduate | Lifelong Learning | Research | Entrepreneurship

Mills College at Northeastern University

The First 100 Days on
our Oakland campus

- Learning
- Facilities
- Future Programming

A photograph of a stone pillar with a sign. The sign reads "MILLS COLLEGE" in a serif font, with "MILLS" on the top line and "COLLEGE" on the bottom line. Below this, there is a horizontal line, followed by "Northeastern University" in a larger serif font. To the right of the pillar, there is a vertical panel with a colorful illustration of a plant. The background shows a blurred green landscape.

MILLS
COLLEGE

**Northeastern
University**

Experiential PhD

- 200+ PhD students and Postdocs embedded with our partners
- 75+ Partnerships
- 40+ LEADERs Fellows
- 47 National Science Foundation Graduate Fellowships Awarded
- 1st Graduate fully embedded PhD student in industry



Jing Chai,
Glaxosmithkline

Innovation

- **Online MBA – EXPO Courses**

Real-life decisions, students assigned to C-Suite roles and modules to dig deeply into core topics

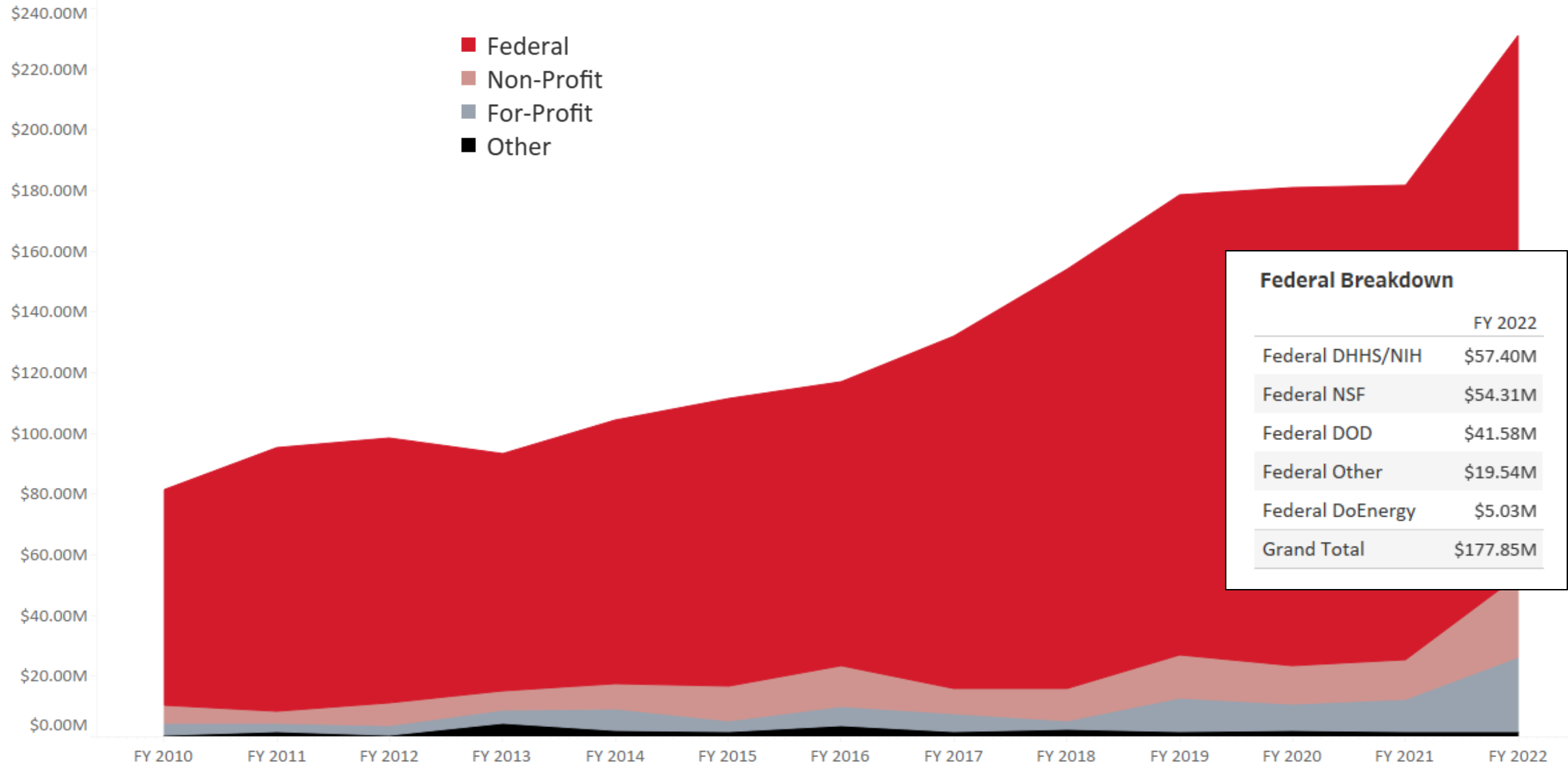
- **Experiential Associates to Master's**

Collaborate with local communities and provide supports to create pathways for students to pursue credentials at multiple levels

- **Invest**

Strengthen the pipeline of strong PhD scientists into Academia to attract bigger, more promising pool of faculty candidates

Research Expenses



Notable Research: Award Success



US Army Corps of Engineers -- \$7.5M

Advanced terrain analytics to support tactical scale planning and operations over varied environments (KRI)

Auroop Ganguly, Stratis Ioannidis, Kaushik Chowdhury, Hanu Singh, Cordula Robinson



DEVCOM DAC -- \$8.5M

Testing & Evaluation for Soldier-Device Teaming Compatibility, Vulnerability, and Durability in Emergent Situations (KRI)

Deniz Erdogmus, Aanjhan Ranganathan, Pau Closas, Holly Jimison, Misha Pavel, Karen Quigley, Raymond Fu, Gene Tunk, Rifat Sipahi, Cordula Robinson, Milad Siami, Taskin Padir, Hanu Singh, Cody Dunne, Sarah Ostadabbas



NIH National Institute on Drug Abuse (NIDA) -- \$6.7M

An Intranasal GDNF Gene Therapy for Opioid Relapse Reduction

Barbara Waszczak, Elizabeth Byrnes, Emmanuel Pothos. Collaborative with Copernicus Therapeutics, Inc.



National Science Foundation-- \$679,725

Collaborative Research: StudyCrafter: An AI-Supported Platform for Engaging Learners to Conduct Research with Human Subjects

Casper Harteveld



New Collaborative & Convergent Research Awards:



EDA Build Back Better Regional Challenge -- \$499,929

Biomanufacturing: BioConnects New England

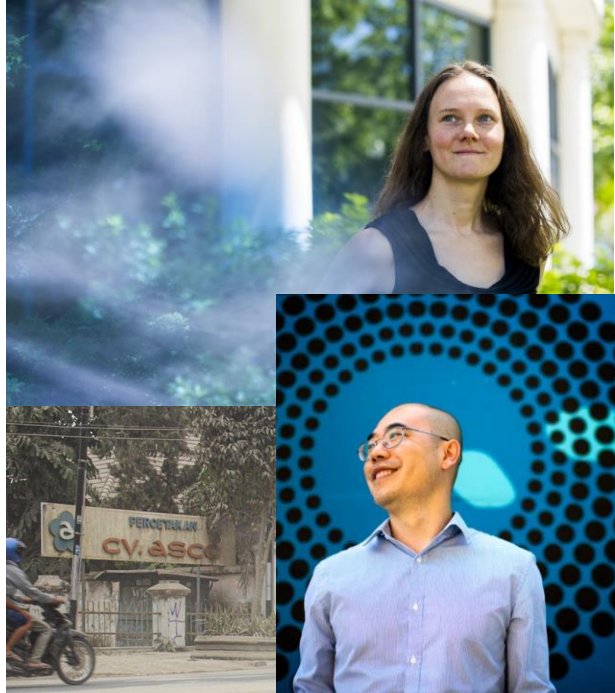
David Luzzi, Liz Zulick, Alicia Sasser-Modestino, Jared Auclair



US National Science Foundation--- \$2.5M

SCC-IRG Track 1: Common SENSES (Standards for ENacting Sensor networks for an Equitable Society) : Community-Led, Science-Driven Climate Resilience in Boston, MA

Daniel O'Brien, Moira Zellner, Amy Mueller, Michelle Laboy, Nayeli Rodriguez



US National Science Foundation-- \$1.5M

SCC-IRG Track 2: Toxic-Free Footprints to Improve Community Health against Respiratory Hazards

Qi Wang, Yanzhi Wang, Brooke Foucault Welles, Amy Mueller

New Collaborative & Convergent Research Awards:



National Science Foundation--- \$1.1M

LSAMP BD: Northeastern University
 Nominated by the Northeast Louis Stokes
 Alliance for Minority Participation
 GROWING the Northeastern LSAMP BD
 STARS Fellowship Pathway

Sara Wadia-Fascetti, Jacqueline Isaacs,
 Randall Hughes, Richard Harris, Tadarrayl
 Starke

National Science Foundation-- \$1.3M & \$1.6M

BPC-A: Data Alliance on Persistence and Perception in Computing (DAPPIC)

Broadening Participation in the CyberCorps(R) Scholarship for Service Program

Carla Brodley, Burcin Tamer



National Science Foundation--- \$499,998

GERMINATION EXPANSION:
 Building Question Formulation Capacity through the Research Question Network (rQnet)

Sara Wadia-Fascetti, Cigdem Talgar, Daniel Rothstein, Luz Santana, Tiana Yom



A successful year for NSF CAREERs: 8 FY22 Awards



Multiscale Photodynamics Simulations in Solvated and Crystalline Environments: **Steven Lopez (COS)**, \$548,881



SaTC: Secure and Private Wide-area Positioning: **Aanjhan Ranganathan (Khoury)**, \$296,906



General And Optimal Layered Network Visualization: **Cody Dunne (Khoury)**, \$119,599



Qurious: Methods for Making Erroneous Near-term Quantum Computers More Usable: **Devesh Tiwari (COE)**, \$218,283



Mechanisms of G4 DNA Induced Genome Instability: **Tovah Day (COS)**, \$399,479



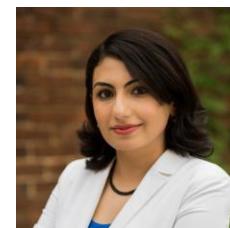
An Ultra-low Power Analog Computing Hardware Design Framework for Machine Learning Inference in Edge Biomedical Devices: **Aatmesh Shrivastava (COE)**, \$400,098



Developing electrically charged biomaterials for targeted drug delivery to negatively charged complex tissue environments: **Ambika Bajpayee (COE)**, \$241,857



Learning Visual Representations of Motor Function in Infants as Prodromal Signs for Autism: **Sarah Ostadabbas (COE)**, \$134,158



Early Career Award Winners from NIH, DOD, & other funders



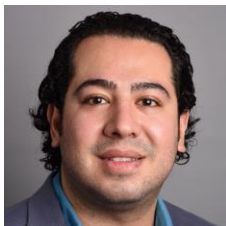
Chiara Bellini (COE) and Jessica Oakes (COE), NIH Outstanding New Environmental (ONES) Award, Cardiopulmonary Risk Assessment from Smoke Exposure at the Wildland Urban Interface, \$3,400,000



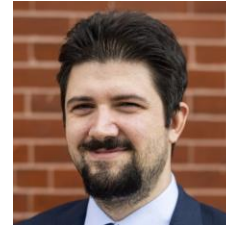
Ryan Koppes (COE), NIH Maximizing Investigating Research Award (MIRA) Early-Stage Investigator, Engineering Multifaceted ED Human Organ Platforms for Toxicity Testing, \$1,960,000



Mahdi Imani (COE), NIH Trailblazer Award, Bayesian Dynamical Modeling of Microbial Communities, \$590,000



Safa Jamali (COE), ARO Young Investigator Award, Synthetic Creation of Colloidal Structures for New Materials, \$360,000



Francesco Restuccia (COE), ONR Young Investigator Program (YIP) Award, Polymorphic Wireless Computing for Ultra-Wideband 6G Spectrum Dominance, \$750,000



Xufeng Zhang (COE), ONR Young Investigator Program (YIP) Award, Cryogenically Enabled Ultrabroadband THz System-on-a-Chip, \$750,000



Sze Zheng Yong (COE), ONR Young Investigator Program (YIP) Award, Distributed Coordination of Autonomous Swarms with Limited or Absent Communication and Intermittent Data, \$750,000



Steven Lopez (COS), Camille-Dreyfus Teacher-Scholar Award, Sustainable Energy and Chemistry through Computations and Machine Learning, \$100,000

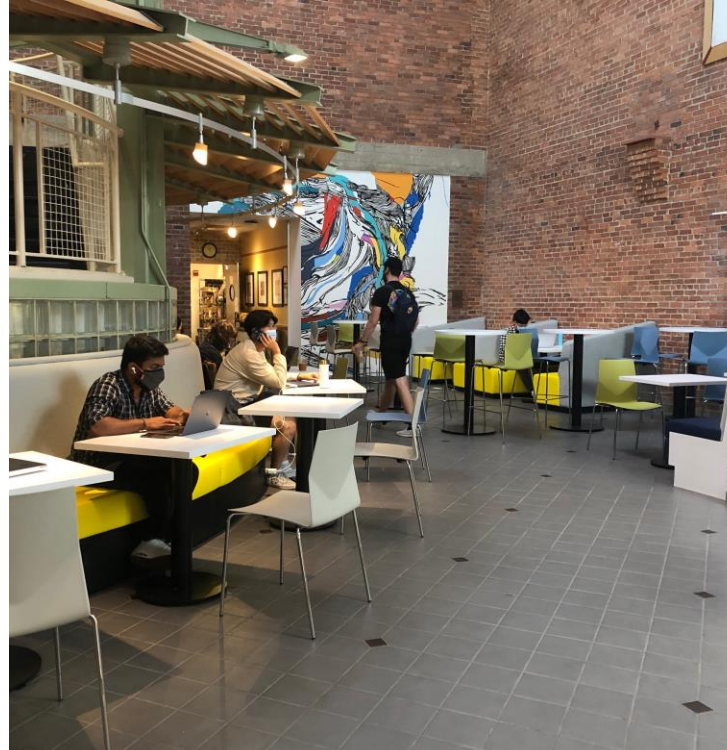
EXP

- 357,000 gross square feet
- 53 offices, 15 research neighborhoods
- 6 classrooms, 10 teaching labs
- 14,700 square feet makerspace
- On Track for Summer 2023 Completion



Study Spaces

- Over **36,000 sf** of space was allocated for bookable student study space
- New flexible furniture is being added to **8 lobby locations**
- Flexible furnishings allow for various of sizes of groups and types of study
- Spaces are bookable via Robin platform



Classrooms

- Full renovations were completed of **21 classrooms** on the Boston campus (Three were converted into dual-use rooms)
- **13 new classrooms** were added to the current inventory
- State of the art furniture and AV offerings were added to allow for flexible usage by its users.

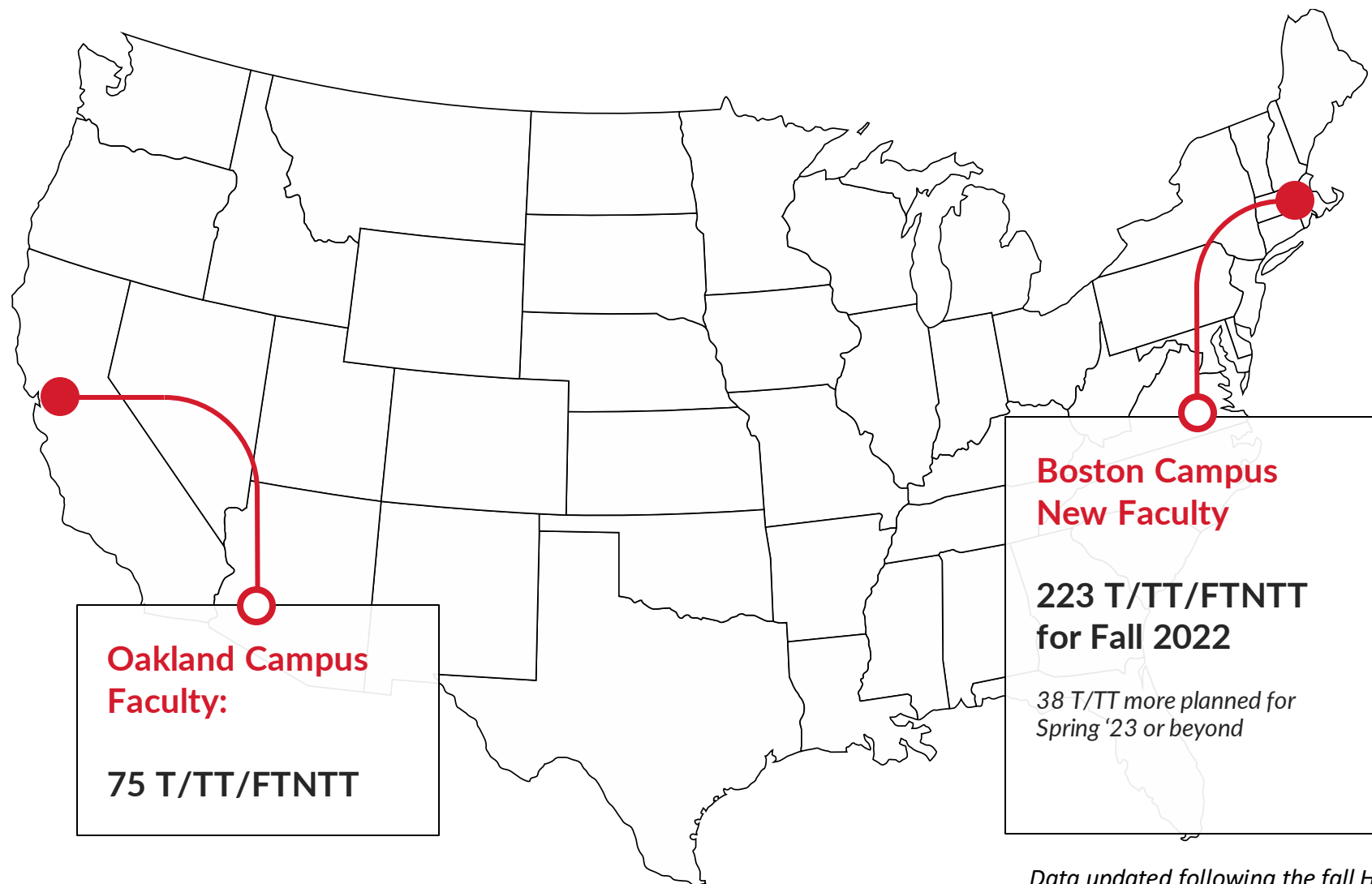


Snell Library

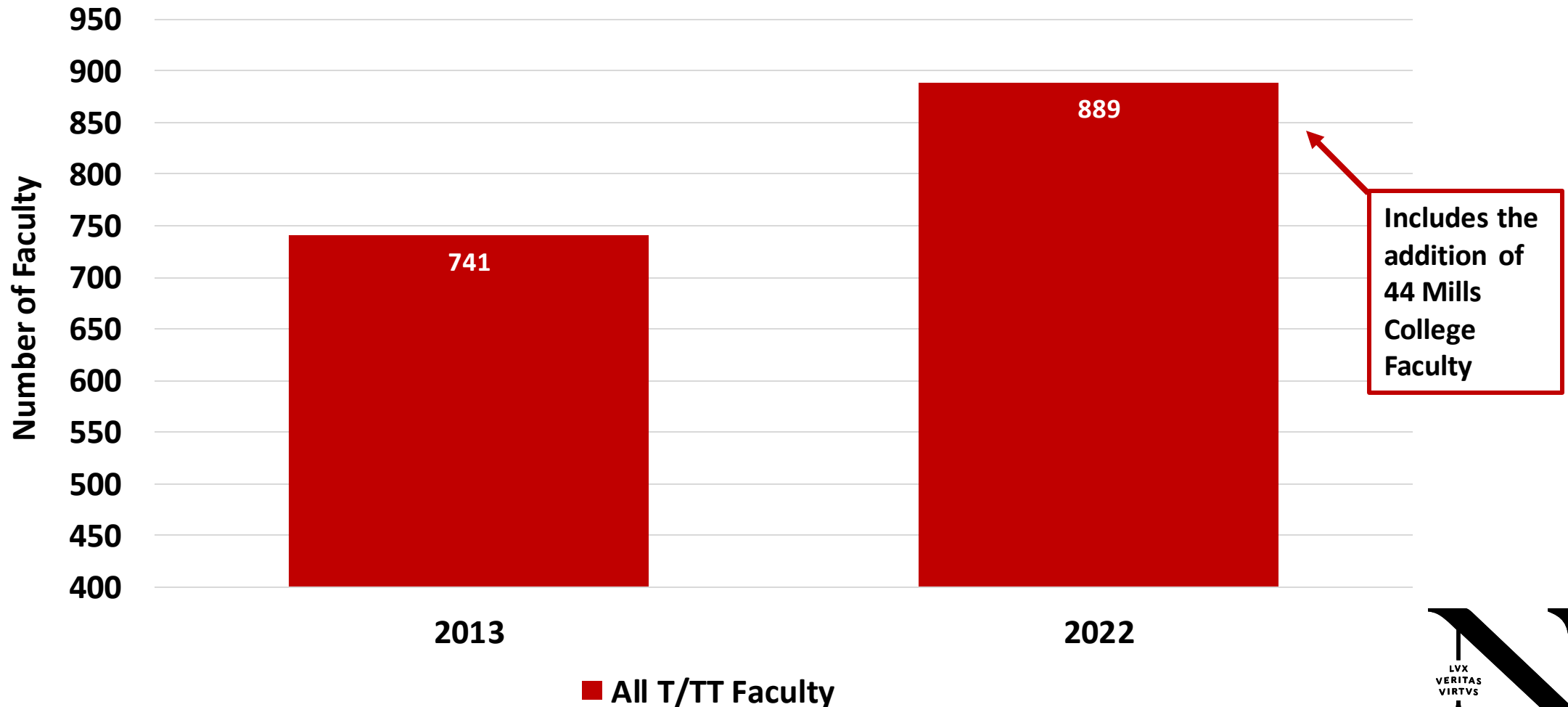
- Target Phased Renovation Completion by Fall 2024
- Updates 140,000 SF across 5 floors
- Main Stairwell renovation was completed this summer allowing for an Increase Building Capacity and student seating as floors complete their renovation
- Creating “neighborhoods” highlighting the study of Humanics and co-locating related resources
- Re-imagining a *21st century library* incorporating aspects of collaboration, technology and progress



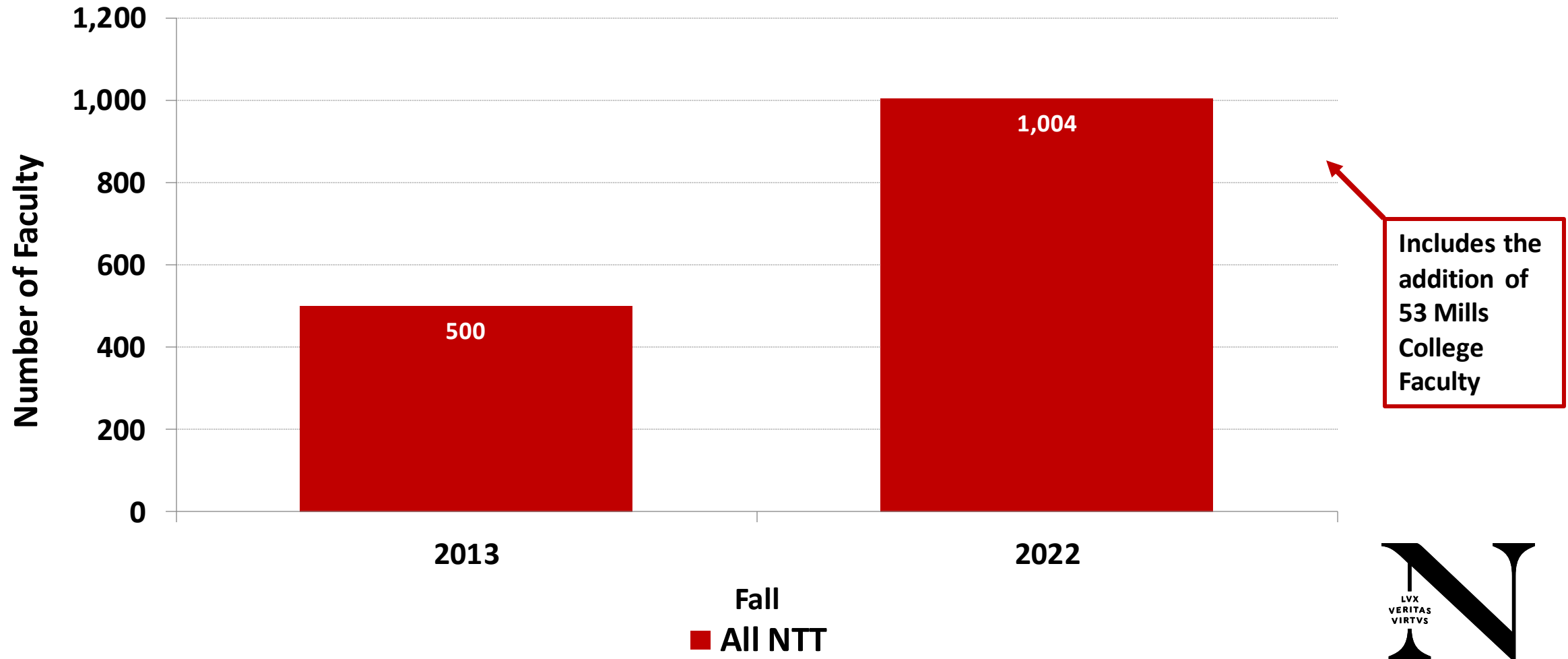
Faculty Profile - Fall 2022



Faculty: Full Time T&TT Faculty Growth

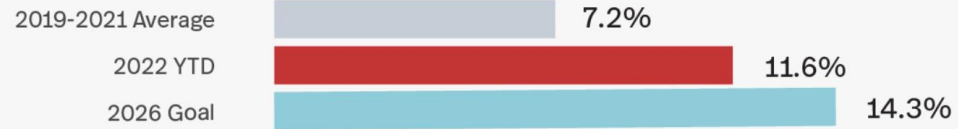


Faculty: Full Time NTT Faculty Growth

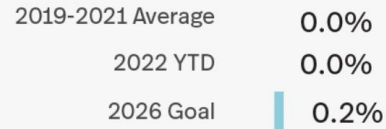


Newly-Hired Full-Time Faculty

Black or African American



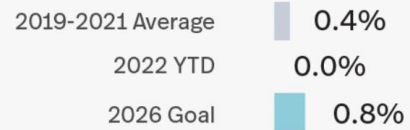
Native Hawaiian or Pacific Islander



Hispanic or Latinx



Native American or Alaska Native



0.00%

10.0%

20.0%



Moving forward